

GRK2 Monoclonal Antibody

Description

Product type	Antibody
Code	BT-MCA3220
Host	Mouse
Isotype	Mouse IgG1
Size	100μL, 50μL
Immunogen	Purified recombinant fragment of human GRK2 expressed in E. Coli.
Mol wt	80kDa
Species reactivity	Human,Mouse,Rat,Monkey
Clonality	Monoclonal
Recommended application	WB,IHC,ICC
Concentration	N/A
Full name	N/A
Synonyms	GRK2;BARK1;FLJ16718;BETA-ARK1;ADRBK1

This product is for research use only, not for use in human, therapeutic or diagnostic procedure.

Background

The product of this gene phosphorylates the beta-2-adrenergic receptor and appears to mediate agonist-specific desensitization observed at high agonist concentrations. This protein is an ubiquitous cytosolic enzyme that specifically phosphorylates the activated form of the beta-adrenergic and related G-protein-coupled receptors. Abnormal coupling of beta-adrenergic receptor to G protein is involved in the pathogenesis of the failing heart. (provided by RefSeq)Tissue specificity: Expressed in peripheral blood leukocytes

Recommended Dilution

WB: 1:500 - 1:2000

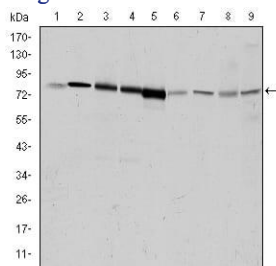
IHC-p: 1:200 - 1:1000

ICC: 1:200 - 1:1000

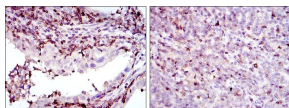
ELISA: 1:10000

Not yet tested in other applications.

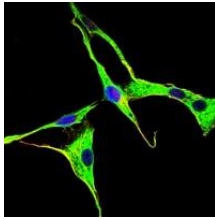
Images



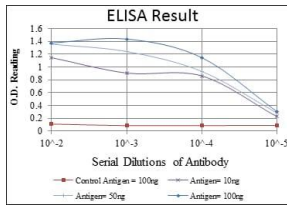
Western blot analysis using GRK2 mouse mAb against HeLa (1), Jurkat (2), MOLT4 (3), RAJI (4), THP-1 (5), L1210 (6), Cos7 (7), PC-12 (8), and NIH/3T3 (9) cell lysate.



Immunohistochemical analysis of paraffin-embedded endometrial cancer tissues (left) and cervical cancer tissues (right) using GRK2 mouse mAb with DAB staining.



Immunofluorescence analysis of NIH/3T3 cells using GRK2 mouse mAb (green). Blue: DRAQ5 fluorescent DNA dye.



Red: Control Antigen (100ng); Purple: Antigen (10ng); Green: Antigen (50ng); Blue: Antigen (100ng);

Storage

Store at 4°C short term. Aliquot and store at -20°C long term.

501 Changsheng S Rd, Nanhu Dist, Jiaxing, Zhejiang, China

Tel: 86 21 31007137 | E-mail: save@bt-laboratory.com | www.bt-laboratory.com