

## MDM4 Monoclonal Antibody

### Description

<b>Product type</b>	Antibody
<b>Code</b>	BT-MCA3238
<b>Host</b>	Mouse
<b>Isotype</b>	Mouse IgG1
<b>Size</b>	100µL, 50µL
<b>Immunogen</b>	Purified recombinant fragment of human MDM4 expressed in E. Coli.
<b>Mol wt</b>	55kDa
<b>Species reactivity</b>	Human
<b>Clonality</b>	Monoclonal
<b>Recommended application</b>	IHC,ICC
<b>Concentration</b>	N/A
<b>Full name</b>	N/A
<b>Synonyms</b>	HDMX;MDMX;MRP1;MDM4

This product is for research use only, not for use in human, therapeutic or diagnostic procedure.

### Background

MDM4, encodes a 490-amino acid protein containing a RING finger domain and a putative nuclear localization signal. The MDM4 putative nuclear localization signal, which all Mdm proteins contain, is located in the C-terminal region of the protein. The mRNA is expressed at a high level in thymus and at lower levels in all other tissues tested. MDM4 protein produced by in vitro translation interacts with p53 via a binding domain located in the N-terminal region of the MDM4 protein. MDM4 shows significant structural similarity to p53-binding protein MDM2.

### Recommended Dilution

WB: 1:500 - 1:2000

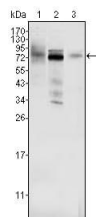
IHC-p: 1:200 - 1:1000

ICC: 1:200 - 1:1000

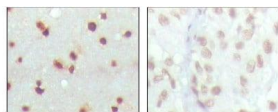
ELISA: 1:10000

Not yet tested in other applications.

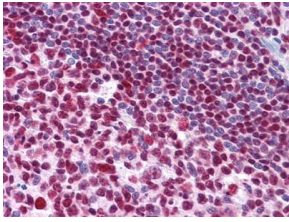
### Images



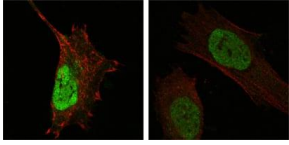
Western blot analysis using MDM4 mouse mAb against HeLa (1), A549 (2) and A431 (3) cell lysate.



Immunohistochemical analysis of paraffin-embedded human cerebra (left) and lung carcinoma (right) tissues, showing nuclear localization with DAB staining using MDM4 mouse mAb.



Immunohistochemical analysis of paraffin-embedded human Tonsil tissues using MDM4 mouse mAb



Confocal Immunofluorescence analysis of HeLa (left) and L-02 (right) cells using MDM4 mouse mAb (green). Red: Actin filaments have been labeled with DY-554 phalloidin.

### Storage

Store at 4°C short term. Aliquot and store at -20°C long term.

501 Changsheng S Rd, Nanhu Dist, Jiaxing, Zhejiang, China

Tel: 86 21 31007137 | E-mail: [save@bt-laboratory.com](mailto:save@bt-laboratory.com) | [www.bt-laboratory.com](http://www.bt-laboratory.com)