

SRC Monoclonal Antibody

Description

Product type	Antibody
Code	BT-MCA3256
Host	Mouse
Isotype	Mouse IgG1
Size	100μL, 50μL
Immunogen	Purified recombinant fragment of human SRC expressed in E. Coli.
Mol wt	60kDa
Species reactivity	Human
Clonality	Monoclonal
Recommended application	WB,IHC,FCM
Concentration	N/A
Full name	N/A
Synonyms	ASV;SRC1;c-SRC;p60-Src

This product is for research use only, not for use in human, therapeutic or diagnostic procedure.

Background

This gene is highly similar to the v-src gene of Rous sarcoma virus. This proto-oncogene may play a role in the regulation of embryonic development and cell growth. The protein encoded by this gene is a tyrosine-protein kinase whose activity can be inhibited by phosphorylation by c-SRC kinase. Mutations in this gene could be involved in the malignant progression of colon cancer. Two transcript variants encoding the same protein have been found for this gene.

Recommended Dilution

WB: 1:500 - 1:2000

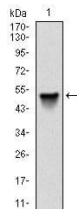
IHC-p: 1:200 - 1:1000

FCM: 1:200 - 1:400

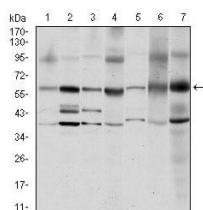
ELISA: 1:10000

Not yet tested in other applications.

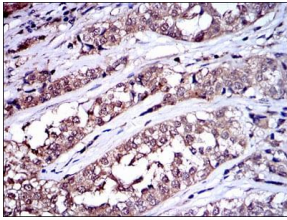
Images



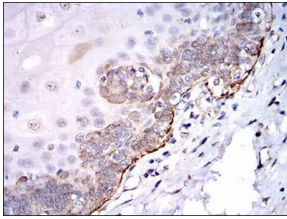
Western blot analysis using SRC mAb against human SRC (AA: 1-189) recombinant protein.
(Expected MW is 47.8 kDa)



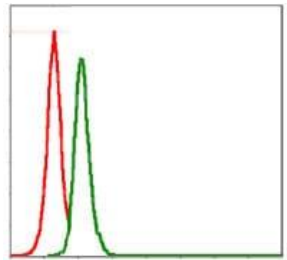
Western blot analysis using SRC mouse mAb against MCF-7 (1), A431 (2), HeLa (3), HEK293 (4), NIH/3T3 (5), PC-12 (6) and Cos7 (7) cell lysate.



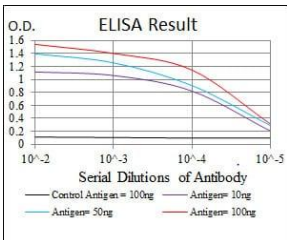
Immunohistochemical analysis of paraffin-embedded bladder cancer tissues using SRC mouse mAb with DAB staining.



Immunohistochemical analysis of paraffin-embedded esophageal tissues using SRC mouse mAb with DAB staining.



Flow cytometric analysis of MCF-7 cells using SRC mouse mAb (green) and negative control (red).



Black line: Control Antigen (100 ng); Purple line: Antigen(10ng); Blue line: Antigen (50 ng); Red line: Antigen (100 ng);

Storage

Store at 4°C short term. Aliquot and store at -20°C long term.

501 Changsheng S Rd, Nanhu Dist, Jiaxing, Zhejiang, China

Tel: 86 21 31007137 | E-mail: save@bt-laboratory.com | www.bt-laboratory.com