

## PHB Monoclonal Antibody

### Description

<b>Product type</b>	Antibody
<b>Code</b>	BT-MCA3263
<b>Host</b>	Mouse
<b>Isotype</b>	Mouse IgG1
<b>Size</b>	100µL, 50µL
<b>Immunogen</b>	Purified recombinant fragment of human PHB expressed in E. Coli.
<b>Mol wt</b>	30kDa
<b>Species reactivity</b>	Human,Mouse,Rat,Monkey
<b>Clonality</b>	Monoclonal
<b>Recommended application</b>	WB,IHC,ICC,FCM
<b>Concentration</b>	N/A
<b>Full name</b>	N/A
<b>Synonyms</b>	PHB1

This product is for research use only, not for use in human, therapeutic or diagnostic procedure.

### Background

Prohibitin is an evolutionarily conserved gene that is ubiquitously expressed. It is thought to be a negative regulator of cell proliferation and may be a tumor suppressor. Mutations in PHB have been linked to sporadic breast cancer. Prohibitin is expressed as two transcripts with varying lengths of 3' untranslated region. The longer transcript is present at higher levels in proliferating tissues and cells, suggesting that this longer 3' untranslated region may function as a trans-acting regulatory RNA.

### Recommended Dilution

WB: 1:500 - 1:2000

IHC-p: 1:200 - 1:1000

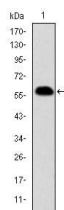
ICC: 1:200 - 1:1000

FCM: 1:200 - 1:400

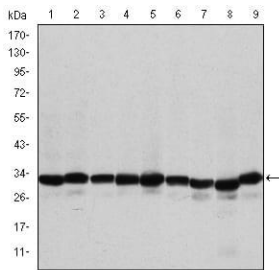
ELISA: 1:10000

Not yet tested in other applications.

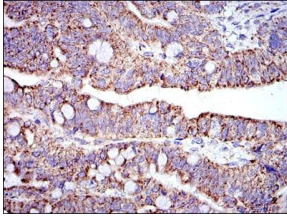
### Images



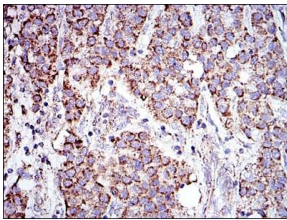
Western blot analysis using PHB mAb against human PHB (AA: 68-259) recombinant protein.  
(Expected MW is 46.7 kDa)



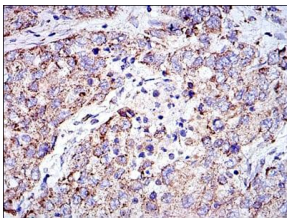
Western blot analysis using PHB mouse mAb against A431 (1), MCF-7 (2), Jurkat (3), HeLa (4), HepG2 (5), A549 (6), NIH/3T3 (7), Cos7 (8) and PC-12 (9) cell lysate.



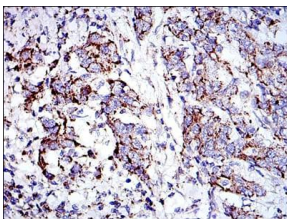
Immunohistochemical analysis of paraffin-embedded rectum cancer tissues using PHB mouse mAb with DAB staining.



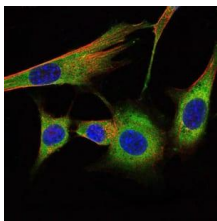
Immunohistochemical analysis of paraffin-embedded liver cancer tissues using PHB mouse mAb with DAB staining.



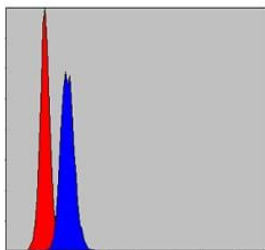
Immunohistochemical analysis of paraffin-embedded lung cancer tissues using PHB mouse mAb with DAB staining.



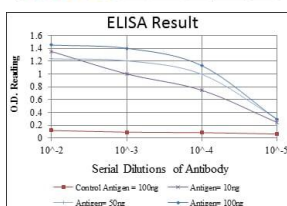
Immunohistochemical analysis of paraffin-embedded stomach cancer tissues using PHB mouse mAb with DAB staining.



Immunofluorescence analysis of NIH/3T3 cells using PHB mouse mAb (green). Blue: DRAQ5 fluorescent DNA dye. Red: Actin filaments have been labeled with Alexa Fluor-555 phalloidin.



Flow cytometric analysis of MCF-7 cells using PHB mouse mAb (blue) and negative control (red).



Red: Control Antigen (100ng); Purple: Antigen (10ng); Green: Antigen (50ng); Blue: Antigen (100ng);

### Storage

Store at 4°C short term. Aliquot and store at -20°C long term.

501 Changsheng S Rd, Nanhu Dist, Jiaxing, Zhejiang, China  
Tel: 86 21 31007137 | E-mail: [save@bt-laboratory.com](mailto:save@bt-laboratory.com) | [www.bt-laboratory.com](http://www.bt-laboratory.com)