

EEF2 Monoclonal Antibody

Description

Product type	Antibody
Code	BT-MCA3270
Host	Mouse
Isotype	Mouse IgG1
Size	100µL, 50µL
Immunogen	Purified recombinant fragment of human EEF2 expressed in E. Coli.
Mol wt	95kDa
Species reactivity	Human
Clonality	Monoclonal
Recommended application	WB,IHC,ICC
Concentration	N/A
Full name	N/A
Synonyms	EF2;EEF-2;EEF2

This product is for research use only, not for use in human, therapeutic or diagnostic procedure.

Background

This gene encodes a member of the GTP-binding translation elongation factor family. This protein is an essential factor for protein synthesis. It promotes the GTP-dependent translocation of the nascent protein chain from the A-site to the P-site of the ribosome. This protein is completely inactivated by EF-2 kinase phosphorylation. (provided by RefSeq)

Recommended Dilution

WB: 1:500 - 1:2000

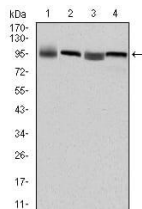
IHC-p: 1:200 - 1:1000

ICC: 1:200 - 1:1000

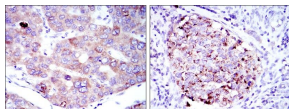
ELISA: 1:10000

Not yet tested in other applications.

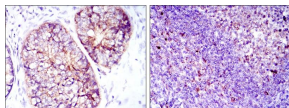
Images



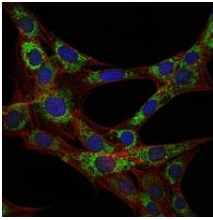
Western blot analysis using EEF2 mouse mAb against HepG2 (1), HeLa (2), HEK293 (3) and A431 (4) cell lysate.



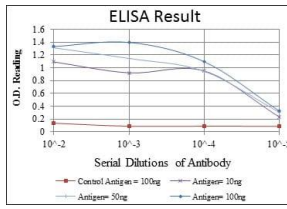
Immunohistochemical analysis of paraffin-embedded liver cancer tissues (left) and kidney cancer tissues (right) using EEF2 mouse mAb with DAB staining.



Immunohistochemical analysis of paraffin-embedded prostate cancer tissues (left) and tonsil tissues (right) using EEF2 mouse mAb with DAB staining.



Immunofluorescence analysis of 3T3-L1 cells using EEF2 mouse mAb (green). Blue: DRAQ5 fluorescent DNA dye. Red: Actin filaments have been labeled with Alexa Fluor-555 phalloidin.



Red: Control Antigen (100ng); Purple: Antigen (10ng); Green: Antigen (50ng); Blue: Antigen (100ng);

Storage

Store at 4°C short term. Aliquot and store at -20°C long term.

501 Changsheng S Rd, Nanhu Dist, Jiaxing, Zhejiang, China

Tel: 86 21 31007137 | E-mail: save@bt-laboratory.com | www.bt-laboratory.com