

CHRM3 Monoclonal Antibody

Description

Product type	Antibody
Code	BT-MCA3289
Host	Mouse
Isotype	Mouse IgG2a
Size	100µL, 50µL
Immunogen	N/A
Mol wt	66kDa
Species reactivity	Human,Mouse,Rabbit
Clonality	Monoclonal
Recommended application	IHC,ICC,FCM
Concentration	N/A
Full name	N/A
Synonyms	HM3;PBS;EGBRS;m3AChR

This product is for research use only, not for use in human, therapeutic or diagnostic procedure.

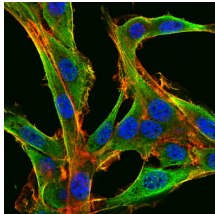
Background

The muscarinic cholinergic receptors belong to a larger family of G protein-coupled receptors. The functional diversity of these receptors is defined by the binding of acetylcholine and includes cellular responses such as adenylate cyclase inhibition, phosphoinositide degeneration, and potassium channel mediation. Muscarinic receptors influence many effects of acetylcholine in the central and peripheral nervous system. The muscarinic cholinergic receptor 3 controls smooth muscle contraction and its stimulation causes secretion of glandular tissue. Alternative promoter use and alternative splicing results in multiple transcript variants that have different tissue specificities. [provided by RefSeq, Dec 2016]

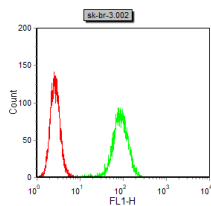
Recommended Dilution

Not yet tested in other applications.

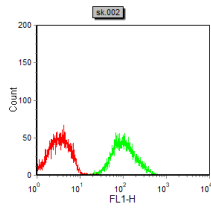
Images



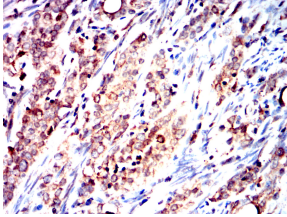
Confocal Immunofluorescence analysis of NIH3T3 cells using CHRM3 mouse mAb (green). Red: Actin filaments have been labeled with Alexa Fluor-555 phalloidin. Blue: DRAQ5 fluorescent DNA dye.



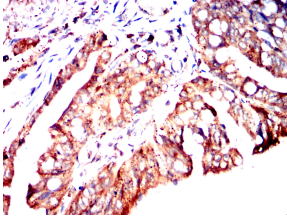
Flow cytometric analysis of SK-BR-3 cells using CHRM3 mouse mAb (green) and negative control (red).



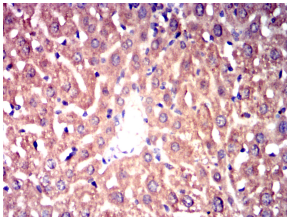
Flow cytometric analysis of SK-N-SH cells using CHRM3 mouse mAb (green) and negative control (red).



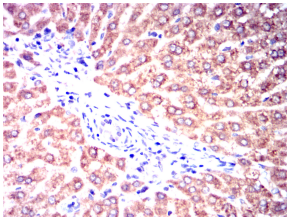
Immunohistochemical analysis of paraffin-embedded human cervical cancer tissues using CHRM3 mouse mAb with DAB staining.



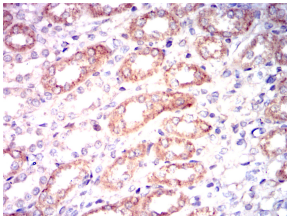
Immunohistochemical analysis of paraffin-embedded human rectal cancer tissues using CHRM3 mouse mAb with DAB staining.



Immunohistochemical analysis of paraffin-embedded mouse liver tissues using CHRM3 mouse mAb with DAB staining.



Immunohistochemical analysis of paraffin-embedded rabbit liver tissues using CHRM3 mouse mAb with DAB staining.



Immunohistochemical analysis of paraffin-embedded rabbit kidney tissues using CHRM3 mouse mAb with DAB staining.

Storage

Store at 4°C short term. Aliquot and store at -20°C long term.

501 Changsheng S Rd, Nanhu Dist, Jiaxing, Zhejiang, China

Tel: 86 21 31007137 | E-mail: save@bt-laboratory.com | www.bt-laboratory.com