

ER-alpha Monoclonal Antibody

Description

Product type	Antibody
Code	BT-MCA3299
Host	Mouse
Isotype	Mouse IgG1
Size	100µL, 50µL
Immunogen	Purified recombinant fragment of human ER-alpha (410-592aa) expressed in E. Coli.
Mol wt	N/A
Species reactivity	Human
Clonality	Monoclonal
Recommended application	WB,IHC
Concentration	N/A
Full name	N/A
Synonyms	ER;ESR1;Era;ESRA

This product is for research use only, not for use in human, therapeutic or diagnostic procedure.

Background

The estrogen receptor (ER) is a ligand-activated transcription factor composed of several domains important for hormone binding, DNA binding, and activation of transcription. Alternative splicing results in several ER mRNA transcripts, which differ primarily in their 5-prime untranslated regions. Two isoforms of the human ER, ERA and ER-beta, occur, each with distinct tissue and cell patterns of expression. Pelletier and El-Alfy (2000) studied the immunocytochemical localization of ESRA and ESRB in human reproductive tissues. In the ovary, ERB immunoreactivity was found in nuclei of granulosa cells of growing follicles at all stages from primary to mature follicles, interstitial gland, and germinal epithelium cells. Nuclear staining for ERA occurred in thecal, interstitial gland, and germinal epithelium cells. In the uterus, strong ERA immunoreactivity was detected in nuclei of epithelial, stromal, and muscle cells.

Recommended Dilution

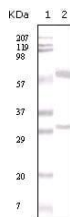
WB: 1:500 - 1:2000

IHC-p: 1:200 - 1:1000

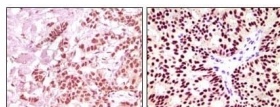
ELISA: 1:10000

Not yet tested in other applications.

Images



Western blot analysis using ER-alpha mouse mAb against human breast carcinoma tissue lysate.



Immunohistochemical analysis of paraffin-embedded human breast carcinoma, using ER-alpha mouse mAb showing nuclear expression with DAB staining.

Storage

Store at 4°C short term. Aliquot and store at -20°C long term.

501 Changsheng S Rd, Nanhu Dist, Jiaxing, Zhejiang, China
Tel: 86 21 31007137 | E-mail: save@bt-laboratory.com | www.bt-laboratory.com