

ACLY Monoclonal Antibody

Description

Product type	Antibody
Code	BT-MCA3317
Host	Mouse
Isotype	Mouse IgG1
Size	100µL, 50µL
Immunogen	Purified recombinant fragment of human ACLY (AA: 306-502) expressed in E. Coli.
Mol wt	125kDa
Species reactivity	Human,Mouse,Monkey,Rat
Clonality	Monoclonal
Recommended application	WB,IHC,ICC,FCM
Concentration	N/A
Full name	N/A
Synonyms	ACL;ATPCL;CLATP

This product is for research use only, not for use in human, therapeutic or diagnostic procedure.

Background

N/A

Recommended Dilution

WB: 1:500 - 1:2000

IHC-p: 1:200 - 1:1000

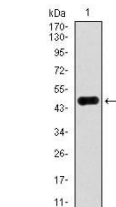
ICC: 1:50

FCM: 1:200 - 1:400

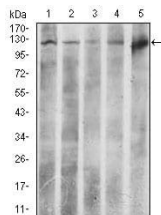
ELISA: 1:10000

Not yet tested in other applications.

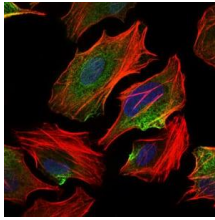
Images



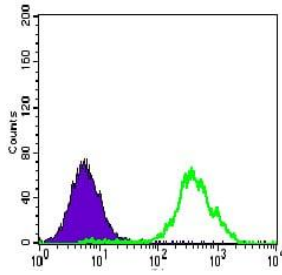
Western blot analysis using ACLY mAb against human ACLY recombinant protein. (Expected MW is 46.7 kDa)



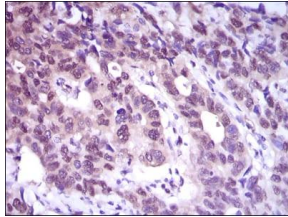
Western blot analysis using ACLY mouse mAb against HeLa (1), NIH3T3 (2), C6 (3), COS7 (4), and Raji (5) cell lysate.



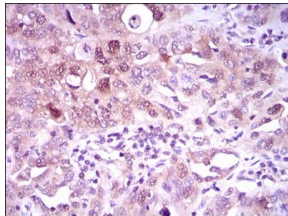
Immunofluorescence analysis of HeLa cells using ACLY mouse mAb (green). Blue: DRAQ5 fluorescent DNA dye. Red: Actin filaments have been labeled with Alexa Fluor-555 phalloidin.



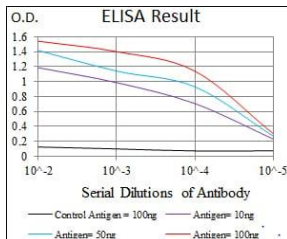
Flow cytometric analysis of HeLa cells using ACLY mouse mAb (green) and negative control (purple).



Immunohistochemical analysis of paraffin-embedded esophageal cancer tissues using ACLY mouse mAb with DAB staining.



Immunohistochemical analysis of paraffin-embedded endometrial cancer tissues using ACLY mouse mAb with DAB staining.



Black line: Control Antigen (100 ng); Purple line: Antigen(10ng); Blue line: Antigen (50 ng); Red line: Antigen (100 ng);

Storage

Store at 4°C short term. Aliquot and store at -20°C long term.

501 Changsheng S Rd, Nanhu Dist, Jiaxing, Zhejiang, China

Tel: 86 21 31007137 | E-mail: save@bt-laboratory.com | www.bt-laboratory.com