

## SPIB Monoclonal Antibody

### Description

<b>Product type</b>	Antibody
<b>Code</b>	BT-MCA3332
<b>Host</b>	Mouse
<b>Isotype</b>	Mouse IgG1
<b>Size</b>	100μL, 50μL
<b>Immunogen</b>	Purified recombinant fragment of human SPIB (AA: 200-252) expressed in E. Coli.
<b>Mol wt</b>	28.8kDa
<b>Species reactivity</b>	Human,Mouse
<b>Clonality</b>	Monoclonal
<b>Recommended application</b>	WB,IHC,ICC,FCM
<b>Concentration</b>	N/A
<b>Full name</b>	N/A
<b>Synonyms</b>	SPI-B

This product is for research use only, not for use in human, therapeutic or diagnostic procedure.

### Background

The protein encoded by this gene is a transcriptional activator that binds to the PU-box (5'-GAGGAA-3') and acts as a lymphoid-specific enhancer. Four transcript variants encoding different isoforms have been found for this gene.

### Recommended Dilution

WB: 1:500 - 1:2000

IHC-p: 1:200 - 1:1000

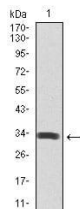
ICC: 1:200 - 1:1000

FCM: 1:200 - 1:400

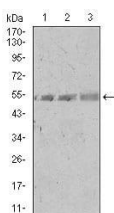
ELISA: 1:10000

Not yet tested in other applications.

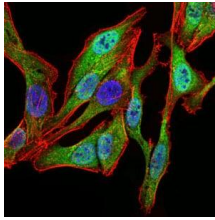
### Images



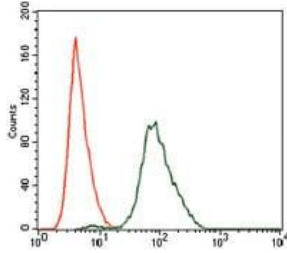
Western blot analysis using SPIB mAb against human SPIB recombinant protein. (Expected MW is 32 kDa)



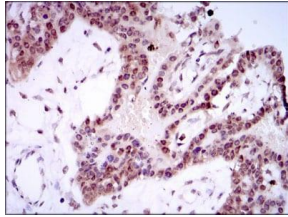
Western blot analysis using SPIB mouse mAb against A549 (1), PC-3 (2), and NIH3T3 (3) cell lysate.



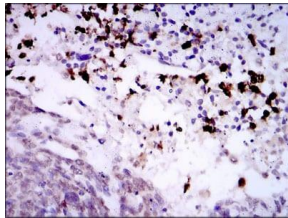
Immunofluorescence analysis of HeLa cells using SPIB mouse mAb (green). Blue: DRAQ5 fluorescent DNA dye. Red: Actin filaments have been labeled with Alexa Fluor-555 phalloidin.



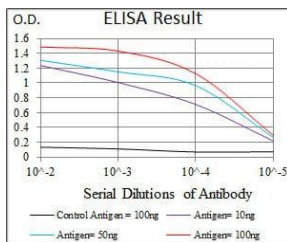
Flow cytometric analysis of NIH3T3 cells using SPIB mouse mAb (green) and negative control (red).



Immunohistochemical analysis of paraffin-embedded ovarian cancer tissues using SPIB mouse mAb with DAB staining.



Immunohistochemical analysis of paraffin-embedded esophageal cancer with DAB staining.



Black line: Control Antigen (100 ng); Purple line: Antigen(10ng); Blue line: Antigen (50 ng); Red line: Antigen (100 ng);

## Storage

Store at 4°C short term. Aliquot and store at -20°C long term.

501 Changsheng S Rd, Nanhu Dist, Jiaxing, Zhejiang, China

Tel: 86 21 31007137 | E-mail: save@bt-laboratory.com | www.bt-laboratory.com