

MSX1 Monoclonal Antibody

Description

Product type	Antibody
Code	BT-MCA3354
Host	Mouse
Isotype	Mouse IgG1
Size	100µL, 50µL
Immunogen	Purified recombinant fragment of human MSX1 expressed in E. Coli.
Mol wt	31kDa
Species reactivity	Human
Clonality	Monoclonal
Recommended application	WB
Concentration	N/A
Full name	N/A
Synonyms	HOX7;HYD1;STHAG1;MSX1

This product is for research use only, not for use in human, therapeutic or diagnostic procedure.

Background

Drosophila, muscle segment (msh) homolog 1, homeo domain encoding gene, inhibiting MYOD1 expression, highly expressed in dental mesenchyme during critical bud stage, involved in epithelial-mesenchymal signaling in many organs, and in the pathogenesis of cleft lip and palate, interacting with MSX2 in mouse limb bud patterning. This gene encodes a member of the muscle segment homeobox gene family. The encoded protein functions as a transcriptional repressor during embryogenesis through interactions with components of the core transcription complex and other homeoproteins. It may also have roles in limb-pattern formation, craniofacial development, particularly odontogenesis, and tumor growth inhibition. Tissue specificity: Expressed in the developing nail bed mesenchyme.

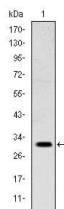
Recommended Dilution

WB: 1:500 - 1:2000

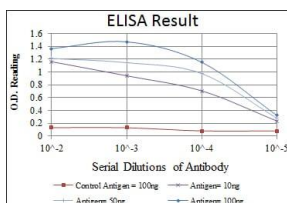
ELISA: 1:10000

Not yet tested in other applications.

Images



Western blot analysis using MSX1 mouse mAb against NTERA-2 cell lysate.



Red: Control Antigen (100ng); Purple: Antigen (10ng); Green: Antigen (50ng); Blue: Antigen (100ng);

Storage

Store at 4°C short term. Aliquot and store at -20°C long term.

501 Changsheng S Rd, Nanhu Dist, Jiaxing, Zhejiang, China

Tel: 86 21 31007137 | E-mail: save@bt-laboratory.com | www.bt-laboratory.com