

RAB4A Monoclonal Antibody

Description

Product type	Antibody
Code	BT-MCA3376
Host	Mouse
Isotype	Mouse IgG1
Size	100µL, 50µL
Immunogen	Purified recombinant fragment of human RAB4A expressed in E. Coli.
Mol wt	23.8kDa
Species reactivity	Human,Mouse,Monkey
Clonality	Monoclonal
Recommended application	WB,IHC,FCM
Concentration	N/A
Full name	N/A
Synonyms	RAB4;HRES-1/RAB4

This product is for research use only, not for use in human, therapeutic or diagnostic procedure.

Background

The protein encoded by this gene belongs to the rab family. Rab4A protein is involved in the regulation of procathepsin L secretion, it was either inhibited by expression of a Rab4A dominant-negative mutant or increased by overexpression of the wild-type Rab4A in human melanoma cells.

Recommended Dilution

WB: 1:500 - 1:2000

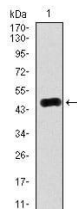
IHC-p: 1:200 - 1:1000

FCM: 1:200 - 1:400

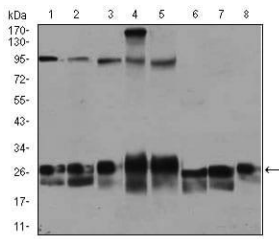
ELISA: 1:10000

Not yet tested in other applications.

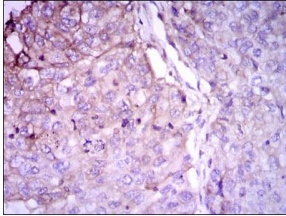
Images



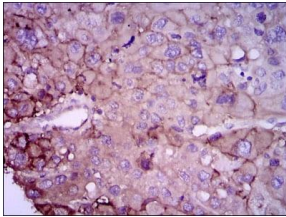
Western blot analysis using RAB4A mAb against human RAB4A (AA: 22-218) recombinant protein.
(Expected MW is 47.9 kDa)



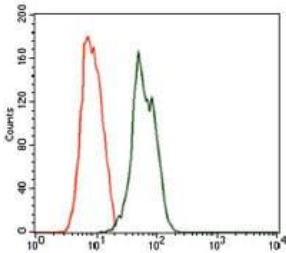
Western blot analysis using RAB4A mouse mAb against Jurkat (1), HeLa (2), A549 (3), HEK293 (4), K562 (5), NIH3T3 (6), PC-12 (7), and COS7 (8) cell lysate.



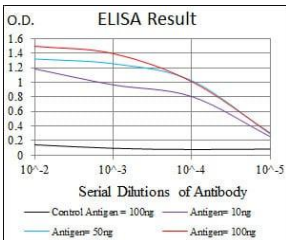
Immunohistochemical analysis of paraffin-embedded lung cancer tissues using RAB4A mouse mAb with DAB staining.



Immunohistochemical analysis of paraffin-embedded liver cancer tissues using RAB4A mouse mAb with DAB staining.



Flow cytometric analysis of MCF-7 cells using RAB4A mouse mAb (green) and negative control (red).



Black line: Control Antigen (100 ng); Purple line: Antigen(10ng); Blue line: Antigen (50 ng); Red line: Antigen (100 ng);

Storage

Store at 4°C short term. Aliquot and store at -20°C long term.

501 Changsheng S Rd, Nanhu Dist, Jiaxing, Zhejiang, China

Tel: 86 21 31007137 | E-mail: save@bt-laboratory.com | www.bt-laboratory.com