

MLL Monoclonal Antibody

Description

Product type	Antibody
Code	BT-MCA3428
Host	Mouse
Isotype	Mouse IgG1
Size	100 μ L, 50 μ L
Immunogen	Purified recombinant fragment of MLL (aa3751-3968) expressed in E. Coli.
Mol wt	N/A
Species reactivity	Human
Clonality	Monoclonal
Recommended application	IHC
Concentration	N/A
Full name	N/A
Synonyms	MLL

This product is for research use only, not for use in human, therapeutic or diagnostic procedure.

Background

Myeloid/lymphoid or mixed-lineage leukemia (trithorax homolog, Drosophila). Eukaryotic RNA polymerase II mediates the synthesis of mature and functional messenger RNA. This is a multistep process, called the transcription cycle, that includes five stages: preinitiation, promoter, clearance, elongation and termination. Elongation is thought to be a critical stage for the regulation of gene expression. ELL (11-19 lysine-rich leukemia protein, also designated MEN) functions as an RNA polymerase II elongation factor that increases the rate of transcription by suppressing transient pausing by RNA polymerase II. Also, ELL is thought to regulate cellular proliferation. ELL is abundantly expressed in peripheral blood leukocytes, skeletal muscle, placenta and testis, and has lower expression in spleen, thymus, heart, brain, lung, kidney, liver and ovary. The gene encoding human ELL, which maps to chromosome 19p13.1, is one of several genes which undergo translocation with the MLL gene on chromosome 11q23 in acute myeloid leukemia. MLL (myeloid/lymphoid leukemia, also designated ALL-1 and HRX) is a 430 kDa protein that regulates embryonal and hematopoietic development.

Recommended Dilution

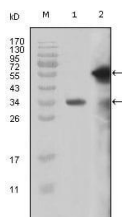
WB: 1:500 - 1:2000

IHC-p: 1:200 - 1:1000

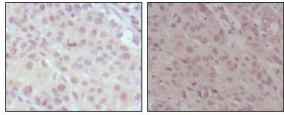
ELISA: 1:10000

Not yet tested in other applications.

Images



Western blot analysis using MLL mouse mAb against truncated MLL recombinant protein (1) and truncated GFP-MLL(aa3714-3969) transfected Cos7 cell lysate (2).



Immunohistochemical analysis of paraffin-embedded human lung cancer (left) and esophagus cancer (right), showing nuclear weak staining with DAB staining using MLL mouse mAb.

Storage

Store at 4°C short term. Aliquot and store at -20°C long term.

501 Changsheng S Rd, Nanhu Dist, Jiaxing, Zhejiang, China

Tel: 86 21 31007137 | E-mail: save@bt-laboratory.com | www.bt-laboratory.com