

ABCG2 Monoclonal Antibody

Description

| | |
|--------------------------------|--|
| Product type | Antibody |
| Code | BT-MCA3431 |
| Host | Mouse |
| Isotype | Mouse IgG1 |
| Size | 100µL, 50µL |
| Immunogen | Purified recombinant fragment of human ABCG2 expressed in E. Coli. |
| Mol wt | 72kDa |
| Species reactivity | Human,Mouse,Monkey |
| Clonality | Monoclonal |
| Recommended application | WB,ICC |
| Concentration | N/A |
| Full name | N/A |
| Synonyms | MRX;MXR;ABCP;BCRP;BMDP;MXR1;ABC15;BCRP1;CD338;CDw338;EST157481;MGC102821 |

This product is for research use only, not for use in human, therapeutic or diagnostic procedure.

Background

The membrane-associated protein encoded by this gene is included in the superfamily of ATP-binding cassette (ABC) transporters. ABC proteins transport various molecules across extra- and intra-cellular membranes. ABC genes are divided into seven distinct subfamilies (ABC1, MDR/TAP, MRP, ALD, OABP, GCN20, White). This protein is a member of the White subfamily. Alternatively referred to as a breast cancer resistance protein, this protein functions as a xenobiotic transporter which may play a major role in multi-drug resistance. It likely serves as a cellular defense mechanism in response to mitoxantrone and anthracycline exposure. Significant expression of this protein has been observed in the placenta, which may suggest a potential role for this molecule in placenta tissue. Tissue specificity: Highly expressed in placenta. Low expression in small intestine, liver and colon.

Recommended Dilution

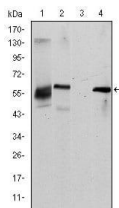
WB: 1:500 - 1:2000

ICC: 1:200 - 1:1000

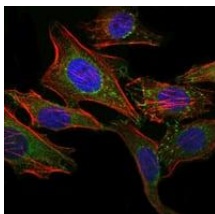
ELISA: 1:10000

Not yet tested in other applications.

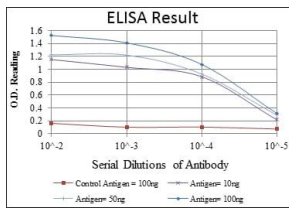
Images



Western blot analysis using ABCG2 mouse mAb against HepG2 (1), Cos7 (2), Jurkat (3) and NIH/3T3 (4) cell lysate.



Immunofluorescence analysis of HeLa cells using ABCG2 mouse mAb (green). Blue: DRAQ5 fluorescent DNA dye. Red: Actin filaments have been labeled with Alexa Fluor-555 phalloidin.



Red: Control Antigen (100ng); Purple: Antigen (10ng); Green: Antigen (50ng); Blue: Antigen (100ng);

Storage

Store at 4°C short term. Aliquot and store at -20°C long term.

501 Changsheng S Rd, Nanhu Dist, Jiaxing, Zhejiang, China

Tel: 86 21 31007137 | E-mail: save@bt-laboratory.com | www.bt-laboratory.com