

Human P16 Monoclonal Antibody

Description

Product type	Antibody
Code	BT-MCA3472
Host	Mouse
Isotype	Mouse IgG1
Size	100µL, 50µL
Immunogen	Purified recombinant fragment of P16 expressed in E. Coli.
Mol wt	N/A
Species reactivity	Human
Clonality	Monoclonal
Recommended application	IHC
Concentration	N/A
Full name	N/A
Synonyms	Human P16

This product is for research use only, not for use in human, therapeutic or diagnostic procedure.

Background

p16 (cyclin-dependent kinase inhibitor 2A, INK4a) is a tumor suppressor protein. It is a specific inhibitor of Cdk 4 / Cdk 6, and a tumor suppressor involved in the pathogenesis of a variety of malignancies. Recent analyses of the p16 INK4a gene revealed homozygous deletions, nonsense, missense, or frameshift mutations in several human cancers. Although the frequency of p16 INK4a abnormalities is higher in tumor derived cell lines than in unselected primary tumors, significant subsets of clinical cases with aberrant p16 INK4a gene have been reported among melanomas, gliomas, esophageal, pancreatic, lung, and urinary bladder carcinomas, and some types of leukemia.

Recommended Dilution

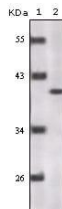
WB: 1:500 - 1:2000

IHC-p: 1:200 - 1:1000

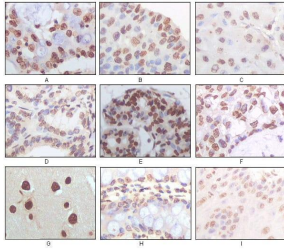
ELISA: 1:10000

Not yet tested in other applications.

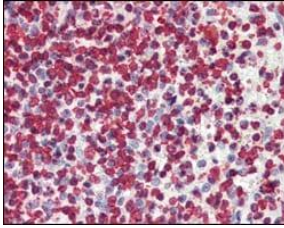
Images



Western blot analysis using P16 mouse mAb against truncated P16 recombinant protein.



Immunohistochemical analysis of paraffin-embedded human lung adenocarcinoma (A), esophageal squamous cell carcinoma (B), hepatic cell carcinoma (C), thyroid tumor (D), breast adenofibroma (E), breast infiltrating ductal carcinoma (F), normal cerebrum tissue (G), normal colon tissue (H), normal esophageal tissue (I), showing nuclear localization using P16 mouse mAb with DAB staining.



Immunohistochemical analysis of paraffin-embedded human spleen tissues using P16 mouse mAb.

Storage

Store at 4°C short term. Aliquot and store at -20°C long term.

501 Changsheng S Rd, Nanhu Dist, Jiaxing, Zhejiang, China

Tel: 86 21 31007137 | E-mail: save@bt-laboratory.com | www.bt-laboratory.com