

CSF1 Monoclonal Antibody

Description

Product type	Antibody
Code	BT-MCA3486
Host	Mouse
Isotype	Mouse IgG1
Size	100µL, 50µL
Immunogen	Purified recombinant fragment of human CSF1 expressed in E. Coli.
Mol wt	60kDa
Species reactivity	Human
Clonality	Monoclonal
Recommended application	IHC
Concentration	N/A
Full name	N/A
Synonyms	MCSF

This product is for research use only, not for use in human, therapeutic or diagnostic procedure.

Background

CSF1, also known as MCSF, is a four- α -helical bundle cytokine that controls the production, differentiation, and function of macrophages. The active form of the protein is found extracellularly as a disulfide-linked homodimer, and is thought to be produced by proteolytic cleavage of membrane-bound precursors. This protein may be involved in development of the placenta.

Recommended Dilution

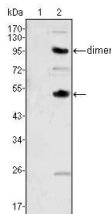
WB: 1:500 - 1:2000

IHC-p: 1:200 - 1:1000

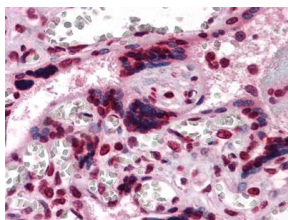
ELISA: 1:10000

Not yet tested in other applications.

Images



Western blot analysis using CSF1 mouse mAb against human recombinant CSF2(AA:18-144) (1) and CSF1(AA:33-496) (2).



Immunohistochemical analysis of paraffin-embedded human Placenta tissues using anti-CSF1 mouse mAb

Storage

Store at 4°C short term. Aliquot and store at -20°C long term.

501 Changsheng S Rd, Nanhu Dist, Jiaxing, Zhejiang, China

Tel: 86 21 31007137 | E-mail: save@bt-laboratory.com | www.bt-laboratory.com