

KLHL11 Monoclonal Antibody

Description

Product type	Antibody
Code	BT-MCA3517
Host	Mouse
Isotype	Mouse IgG1
Size	100µL, 50µL
Immunogen	Purified recombinant fragment of human KLHL11 expressed in E. Coli.
Mol wt	80kDa
Species reactivity	Human
Clonality	Monoclonal
Recommended application	IHC,ICC
Concentration	N/A
Full name	N/A
Synonyms	FLJ10572;KLHL11

This product is for research use only, not for use in human, therapeutic or diagnostic procedure.

Background

Kelch-like protein 11, Subcellular location Secreted.

Recommended Dilution

WB: 1:500 - 1:2000

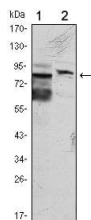
IHC-p: 1:200 - 1:1000

ICC: 1:200 - 1:1000

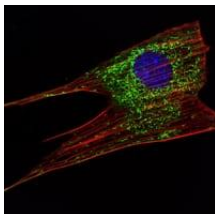
ELISA: 1:10000

Not yet tested in other applications.

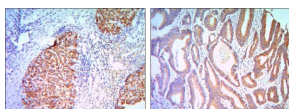
Images



Western blot analysis using KLHL11 mouse mAb against HeLa (1) and MCF-7 (2) cell lysate.



Immunofluorescence analysis of NIH/3T3 cells using KLHL11 mouse mAb (green). Blue: DRAQ5 fluorescent DNA dye. Red: Actin filaments have been labeled with Alexa Fluor-555 phalloidin.



Immunohistochemical analysis of paraffin-embedded liver cancer (right) and colon cancer tissues (left) using KLHL11 mouse mAb with DAB staining.

Storage

Store at 4°C short term. Aliquot and store at -20°C long term.

501 Changsheng S Rd, Nanhu Dist, Jiaxing, Zhejiang, China
Tel: 86 21 31007137 | E-mail: save@bt-laboratory.com | www.bt-laboratory.com