

SERPINE1 Monoclonal Antibody

Description

Product type	Antibody
Code	BT-MCA3554
Host	Mouse
Isotype	Mouse IgG1
Size	100µL, 50µL
Immunogen	Purified recombinant fragment of human SERPINE1 expressed in E. Coli.
Mol wt	45kDa
Species reactivity	Human
Clonality	Monoclonal
Recommended application	IHC,FCM
Concentration	N/A
Full name	N/A
Synonyms	PAI;PAI1;PAI-1;PLANH1

This product is for research use only, not for use in human, therapeutic or diagnostic procedure.

Background

This gene encodes a member of the serine proteinase inhibitor (serpin) superfamily. This member is the principal inhibitor of tissue plasminogen activator (tPA) and urokinase (uPA), and hence is an inhibitor of fibrinolysis. Defects in this gene are the cause of plasminogen activator inhibitor-1 deficiency (PAI-1 deficiency), and high concentrations of the gene product are associated with thrombophilia. Alternatively spliced transcript variants encoding different isoforms have been found for this gene.

Recommended Dilution

WB: 1:500 - 1:2000

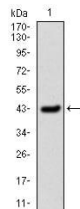
IHC-p: 1:200 - 1:1000

FCM: 1:200 - 1:400

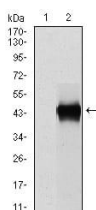
ELISA: 1:10000

Not yet tested in other applications.

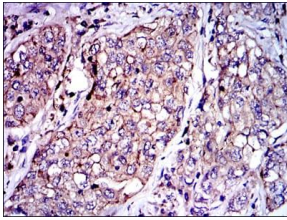
Images



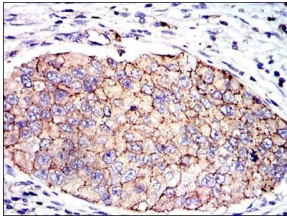
Western blot analysis using SERPINE1 mAb against human SERPINE1 (AA: 194-316) recombinant protein. (Expected MW is 45kDa kDa)



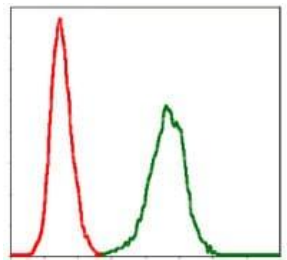
Western blot analysis using SERPINE1 mAb against HEK293 (1) and SERPINE1 (AA: 194-316)-hlgGfc transfected HEK293 (2) cell lysate.



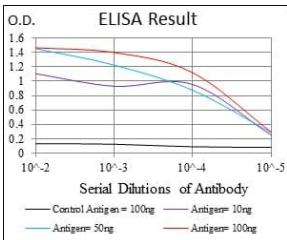
Immunohistochemical analysis of paraffin-embedded lung cancer tissues using SERPINE1 mouse mAb with DAB staining.



Immunohistochemical analysis of paraffin-embedded kidney cancer tissues using SERPINE1 mouse mAb with DAB staining.



Flow cytometric analysis of NIH/3T3 cells using SERPINE1 mouse mAb (green) and negative control (red).



Black line: Control Antigen (100 ng); Purple line: Antigen(10ng); Blue line: Antigen (50 ng); Red line: Antigen (100 ng);

Storage

Store at 4°C short term. Aliquot and store at -20°C long term.

501 Changsheng S Rd, Nanhu Dist, Jiaxing, Zhejiang, China

Tel: 86 21 31007137 | E-mail: save@bt-laboratory.com | www.bt-laboratory.com