

REG1A Monoclonal Antibody

Description

Product type	Antibody
Code	BT-MCA3558
Host	Mouse
Isotype	Mouse IgG1
Size	100µL, 50µL
Immunogen	Purified recombinant fragment of human REG1A fused with hIgGFc tag expressed in HEK293 cell line.
Mol wt	19kDa
Species reactivity	Human
Clonality	Monoclonal
Recommended application	IHC,ICC
Concentration	N/A
Full name	N/A
Synonyms	P19;PTP;PSP

This product is for research use only, not for use in human, therapeutic or diagnostic procedure.

Background

REG1A (regenerating islet-derived 1 alpha), also known as PTP, PSP, is a member of the Reg family of secreted proteins with a C-type lectin domain. REG1A is associated with islet cell regeneration and diabetogenesis and may be involved in pancreatic lithogenesis. Due to variable glycosylation, pancreatic REG1A exists as multiple species of 16 - 18 kDa. REG1A promotes the maintenance and growth of pancreatic islet

Recommended Dilution

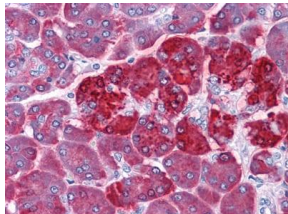
IHC-p: 1:200 - 1:1000

ICC: 1:200 - 1:1000

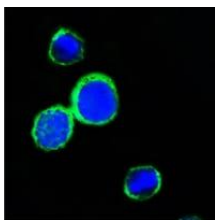
ELISA: 1:10000

Not yet tested in other applications.

Images



Immunohistochemical analysis of paraffin-embedded human Pancreas tissues using REG1A mouse mAb



Confocal Immunofluorescence analysis of PC12 cells using REG1A mouse mAb (green). Blue: DRAQ5 fluorescent DNA dye.

Storage

Store at 4°C short term. Aliquot and store at -20°C long term.

501 Changsheng S Rd, Nanhu Dist, Jiaxing, Zhejiang, China

Tel: 86 21 31007137 | E-mail: save@bt-laboratory.com | www.bt-laboratory.com