

CSNK2A2 Monoclonal Antibody

Description

Product type	Antibody
Code	BT-MCA3570
Host	Mouse
Isotype	Mouse IgG1
Size	100µL, 50µL
Immunogen	Purified recombinant fragment of human CSNK2A2 (AA: 194-350) expressed in E. Coli.
Mol wt	41.2kDa
Species reactivity	Human,Mouse
Clonality	Monoclonal
Recommended application	WB,FCM
Concentration	N/A
Full name	N/A
Synonyms	CK2A2;CSNK2A1;FLJ43934

This product is for research use only, not for use in human, therapeutic or diagnostic procedure.

Background

Casein kinase II (CK2) is a constitutively active, ubiquitously expressed serine/threonine protein kinase that is thought to have a regulatory function in cell proliferation, cell differentiation and apoptosis. CK2 functions as a tetrameric complex consisting of two regulatory beta-subunits and two catalytic units (alpha and alpha') in a homomeric or heteromeric conformation. Whilst the alpha- and alpha'-subunits are catalytically identical, proteins that regulate CK2, such as cdc2 and Hsp90, preferentially bind to the alpha and not the alpha'-subunit. CK2 can phosphorylate a number of key intracellular signaling proteins implicated in tumor suppression (p53 and PTEN) and tumorigenesis (myc, jun, NF-kappaB). CK2 is also thought to influence Wnt signaling via beta-catenin phosphorylation and the PI 3-K signaling pathway via the phosphorylation of Akt.

Recommended Dilution

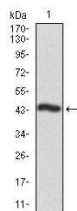
WB: 1:500 - 1:2000

FCM: 1:200 - 1:400

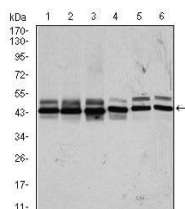
ELISA: 1:10000

Not yet tested in other applications.

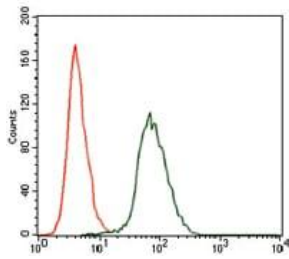
Images



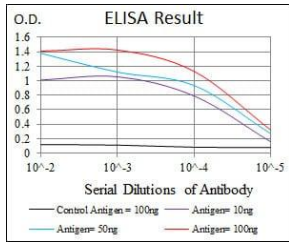
Western blot analysis using CSNK2A2 mAb against human CSNK2A2 recombinant protein.
(Expected MW is 44 kDa)



Western blot analysis using CSNK2A2 mouse mAb against HeLa (1), MCF-7 (2), HepG2 (3), Jurkat (4), NIH3T3 (5), and PC-12 (6) cell lysate.



Flow cytometric analysis of HepG2 cells using CSNK2A2 mouse mAb (green) and negative control (red).



Black line: Control Antigen (100 ng); Purple line: Antigen(10ng); Blue line: Antigen (50 ng); Red line: Antigen (100 ng);

Storage

Store at 4°C short term. Aliquot and store at -20°C long term.

501 Changsheng S Rd, Nanhu Dist, Jiaxing, Zhejiang, China

Tel: 86 21 31007137 | E-mail: save@bt-laboratory.com | www.bt-laboratory.com