

DCX Monoclonal Antibody

Description

Product type	Antibody
Code	BT-MCA3581
Host	Mouse
Isotype	Mouse IgG1
Size	100µL, 50µL
Immunogen	Purified recombinant fragment of human DCX (AA: 362-411) expressed in E. Coli.
Mol wt	49.3kDa
Species reactivity	Human
Clonality	Monoclonal
Recommended application	WB,IHC,ICC,FCM
Concentration	N/A
Full name	N/A
Synonyms	DC;DBCN;LISX;SCLH;XLIS

This product is for research use only, not for use in human, therapeutic or diagnostic procedure.

Background

This gene encodes a member of the doublecortin family. The protein encoded by this gene is a cytoplasmic protein and contains two doublecortin domains, which bind microtubules. In the developing cortex, cortical neurons must migrate over long distances to reach the site of their final differentiation. The encoded protein appears to direct neuronal migration by regulating the organization and stability of microtubules. In addition, the encoded protein interacts with LIS1, the regulatory gamma subunit of platelet activating factor acetylhydrolase, and this interaction is important to proper microtubule function in the developing cortex. Mutations in this gene cause abnormal migration of neurons during development and disrupt the layering of the cortex, leading to epilepsy, mental retardation, subcortical band heterotopia ("double cortex" syndrome) in females and lissencephaly ("smooth brain" syndrome) in males. Multiple transcript variants encoding different isoforms have been found for this gene.

Recommended Dilution

WB: 1:500 - 1:2000

IHC-p: 1:200 - 1:1000

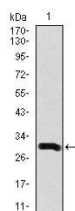
ICC: 1:200 - 1:1000

FCM: 1:200 - 1:400

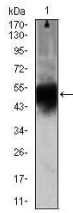
ELISA: 1:10000

Not yet tested in other applications.

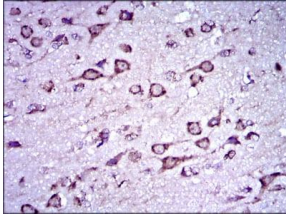
Images



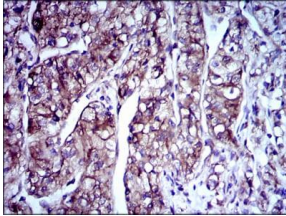
Western blot analysis using DCX mAb against human DCX recombinant protein. (Expected MW is 34.1 kDa)



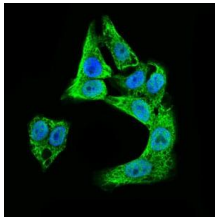
Western blot analysis using DCX mouse mAb against Mouse heart (1) lysate.



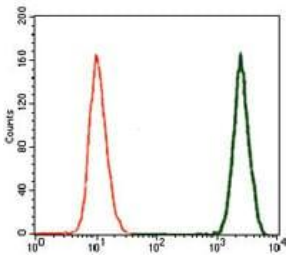
Immunohistochemical analysis of paraffin-embedded brain tissue tissues using DCX mouse mAb with DAB staining.



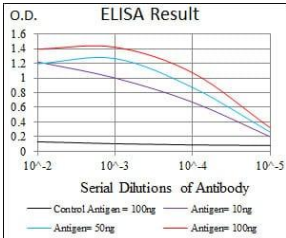
Immunohistochemical analysis of paraffin-embedded kidney cancer tissues using DCX mouse mAb with DAB staining.



Immunofluorescence analysis of HepG2 cells using DCX mouse mAb (green). Blue: DRAQ5 fluorescent DNA dye.



Flow cytometric analysis of SK-N-SH cells using DCX mouse mAb (green) and negative control (red).



Black line: Control Antigen (100 ng); Purple line: Antigen(10ng); Blue line: Antigen (50 ng); Red line: Antigen (100 ng);

Storage

Store at 4°C short term. Aliquot and store at -20°C long term.

501 Changsheng S Rd, Nanhu Dist, Jiaxing, Zhejiang, China

Tel: 86 21 31007137 | E-mail: save@bt-laboratory.com | www.bt-laboratory.com