

## GSK3 alpha Monoclonal Antibody

### Description

<b>Product type</b>	Antibody
<b>Code</b>	BT-MCA3643
<b>Host</b>	Mouse
<b>Isotype</b>	Mouse IgG1
<b>Size</b>	100µL, 50µL
<b>Immunogen</b>	Purified recombinant fragment of GSK3 alpha expressed in E. Coli.
<b>Mol wt</b>	N/A
<b>Species reactivity</b>	Human
<b>Clonality</b>	Monoclonal
<b>Recommended application</b>	WB, ICC
<b>Concentration</b>	N/A
<b>Full name</b>	N/A
<b>Synonyms</b>	DKFZp686D0638; GSK3A

**This product is for research use only, not for use in human, therapeutic or diagnostic procedure.**

### Background

Glycogen synthase kinase 3 alpha belongs to the Ser/Thr family of protein kinases, Cdc2/cdkx subfamily; GSK3 subsubfamily. It is implicated in the hormonal control of several regulatory proteins including glycogen synthase, myb, and the transcription factor c jun. GSK3 phosphorylates glycogen synthase and thereby inactivates it. Insulin stimulates the dephosphorylation of glycogen synthase at the sites phosphorylated by GSK3 and subsequently inhibits GSK3 acutely leading to the stimulation of glycogen synthesis. GSK3 signaling is performed by two isoforms, GSK3 alpha and GSK3 beta. The two isoforms share 97% sequence similarity within their catalytic domains. GSK3 has also been shown to play a role in protein synthesis, cell adhesion, cell proliferation, cell differentiation, microtubule dynamics and cell motility.

### Recommended Dilution

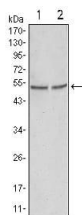
WB: 1:500 - 1:2000

ICC: 1:200 - 1:1000

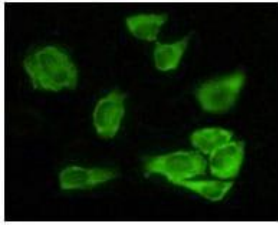
ELISA: 1:10000

Not yet tested in other applications.

### Images



Western blot analysis using GSK3 alpha mouse mAb against HeLa (1) and PC-3 cell lysate.



Immunofluorescence analysis of HeLa cells using GSK3 alpha mouse mAb showing cytoplasmic localization.

### Storage

Store at 4°C short term. Aliquot and store at -20°C long term.

501 Changsheng S Rd, Nanhu Dist, Jiaxing, Zhejiang, China

Tel: 86 21 31007137 | E-mail: [save@bt-laboratory.com](mailto:save@bt-laboratory.com) | [www.bt-laboratory.com](http://www.bt-laboratory.com)