

LSD1/AOF2 Monoclonal Antibody

Description

Product type	Antibody
Code	BT-MCA3657
Host	Mouse
Isotype	Mouse IgG1
Size	100 μ L, 50 μ L
Immunogen	Purified recombinant fragment of human LSD1 expressed in E. Coli.
Mol wt	93kDa
Species reactivity	Human,Mouse,Monkey
Clonality	Monoclonal
Recommended application	WB,IHC
Concentration	N/A
Full name	N/A
Synonyms	KDM1;LSD1;AOF2

This product is for research use only, not for use in human, therapeutic or diagnostic procedure.

Background

The amine oxidase domain 2 (AOF2) gene encodes a nuclear protein (LSD1, ~95kDa) containing a Swirm domain, a FAD-binding motif, and an amine oxidase domain. This protein is a component of several histone deacetylase complexes, though it silences genes by functioning as a histone demethylase. LSD1 is a chromatin-modifying enzyme, which serve as a docking module for the stabilization of the associated corepressor complex (es) on chromatin.

Recommended Dilution

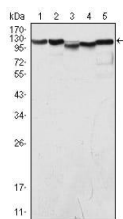
WB: 1:500 - 1:2000

IHC-p: 1:200 - 1:1000

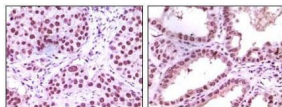
ELISA: 1:10000

Not yet tested in other applications.

Images



Western blot analysis using LSD1 mouse mAb against COS (1), HeLa (2), NIH/3T3 (3), A549 (4) and Jurkat (5) cell lysate.



Immunohistochemical analysis of paraffin-embedded human lung carcinoma (left) and kidney carcinoma (right), showing nuclear localization using LSD1 mouse mAb with DAB staining.

Storage

Store at 4°C short term. Aliquot and store at -20°C long term.