

PRK2 Monoclonal Antibody

Description

Product type	Antibody
Code	BT-MCA3737
Host	Mouse
Isotype	Mouse IgG1
Size	100 μ L, 50 μ L
Immunogen	Purified recombinant fragment of human PRK2 expressed in E. Coli.
Mol wt	140kDa
Species reactivity	Human,Monkey,Mouse,Rat
Clonality	Monoclonal
Recommended application	WB,IHC,FCM
Concentration	N/A
Full name	N/A
Synonyms	PKN2;PAK2;PRK2;Pak-2;PRKCL2;PRO2042;MGC71074;MGC150606

This product is for research use only, not for use in human, therapeutic or diagnostic procedure.

Background

Protein-kinase-C-related kinases (PRKs) are part of the lipid-regulated protein kinases (PKC) which also include liver PAK & PKN. Human PRK1 and PRK2 share structurally similar catalytic domains, but less similar N-terminal regulatory regions suggesting different regulatory domain functions. PRK1 and PRK2, as well as a third member of this family, PRK3, show distinct patterns of expression in adult tissues. Additionally, the serine-threonine kinase PRK2 can be specifically cleaved by caspase-3 (and/or caspase-3-like subfamily members) during apoptosis.

Recommended Dilution

WB: 1:500 - 1:2000

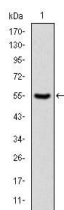
IHC-p: 1:200 - 1:1000

FCM: 1:200 - 1:400

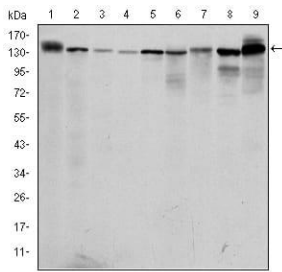
ELISA: 1:10000

Not yet tested in other applications.

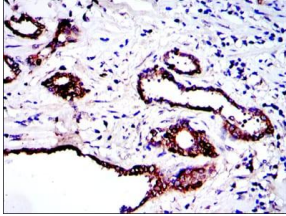
Images



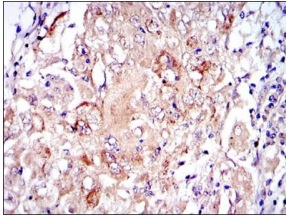
Western blot analysis using PRK2 mAb against human PRK2 (AA: 555-718) recombinant protein.
(Expected MW is 43.9 kDa)



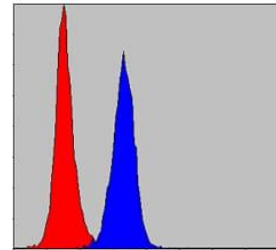
Western blot analysis using PRK2 mouse mAb against PC-12 (1), Cos7 (2), K562 (3), Jurkat (4), HeLa (5), A431 (6), C6 (7), NIH/3T3 (8) and HEK293 (9) cell lysate.



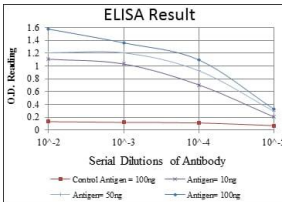
Immunohistochemical analysis of paraffin-embedded prostate tissues using PRK2 mouse mAb with DAB staining.



Immunohistochemical analysis of paraffin-embedded lung cancer tissues using PRK2 mouse mAb with DAB staining.



Flow cytometric analysis of NIH/3T3 cells using PRK2 mouse mAb (blue) and negative control (red).



Red: Control Antigen (100ng); Purple: Antigen (10ng); Green: Antigen (50ng); Blue: Antigen (100ng);

Storage

Store at 4°C short term. Aliquot and store at -20°C long term.

501 Changsheng S Rd, Nanhui Dist, Jiaxing, Zhejiang, China

Tel: 86 21 31007137 | E-mail: save@bt-laboratory.com | www.bt-laboratory.com