

WNT10B Monoclonal Antibody

Description

Product type	Antibody
Code	BT-MCA3769
Host	Mouse
Isotype	Mouse IgG1
Size	100µL, 50µL
Immunogen	Purified recombinant fragment of human WNT10B expressed in E. Coli.
Mol wt	43kDa
Species reactivity	Human
Clonality	Monoclonal
Recommended application	WB,IHC,ICC
Concentration	N/A
Full name	N/A
Synonyms	SHFM6;WNT-12

This product is for research use only, not for use in human, therapeutic or diagnostic procedure.

Background

WNT10B: wingless-type MMTV integration site family, member 10B. The WNT family consists of structurally related secreted signaling proteins. These proteins have been implicated in oncogenesis and in several developmental processes, including regulation of cell fate and patterning during embryogenesis. WNT10B is a member of the WNT gene family. It may be involved in breast cancer, and its protein signaling is likely a molecular switch that governs adipogenesis. This protein is 96% identical to the mouse Wnt10B protein at the amino acid level. The WNT10B gene is clustered with another family member, WNT1, in the chromosome 12q13 region.

Recommended Dilution

WB: 1:500 - 1:2000

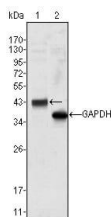
IHC-p: 1:200 - 1:1000

ICC: 1:200 - 1:1000

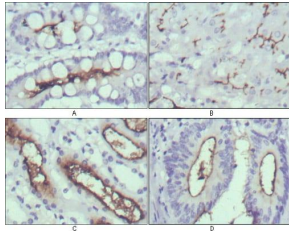
ELISA: 1:10000

Not yet tested in other applications.

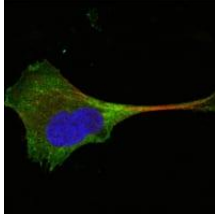
Images



Western blot analysis using WNT10B mouse mAb against HeLa cell lysate (1).



Immunohistochemical analysis of paraffin-embedded human normal stomach (A), normal liver (B), normal kidney (C) and rectum cancer tissues (D) using WNT10B mouse mAb with DAB staining.



Confocal Immunofluorescence analysis of PANC-1 cells using WNT10B mouse mAb (green). Red: Actin filaments have been labeled with Alexa Fluor-555 phalloidin. Blue: DRAQ5 fluorescent DNA dye.

Storage

Store at 4°C short term. Aliquot and store at -20°C long term.

501 Changsheng S Rd, Nanhu Dist, Jiaxing, Zhejiang, China

Tel: 86 21 31007137 | E-mail: save@bt-laboratory.com | www.bt-laboratory.com