

CRTC2 Monoclonal Antibody

Description

Product type	Antibody
Code	BT-MCA3789
Host	Mouse
Isotype	Mouse IgG1
Size	100µL, 50µL
Immunogen	Purified recombinant fragment of human CRTC2 expressed in E. Coli.
Mol wt	80kDa
Species reactivity	Human,Monkey
Clonality	Monoclonal
Recommended application	WB,IHC,ICC,FCM
Concentration	N/A
Full name	N/A
Synonyms	TORC2;TORC-2;CRTC2

This product is for research use only, not for use in human, therapeutic or diagnostic procedure.

Background

Glucose homeostasis is regulated by hormones and cellular energy status. Elevations of blood glucose during feeding stimulate insulin release from pancreatic

Recommended Dilution

WB: 1:500 - 1:2000

IHC-p: 1:200 - 1:1000

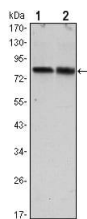
ICC: 1:200 - 1:1000

FCM: 1:200 - 1:400

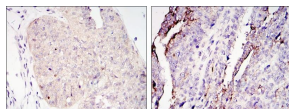
ELISA: 1:10000

Not yet tested in other applications.

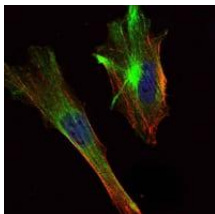
Images



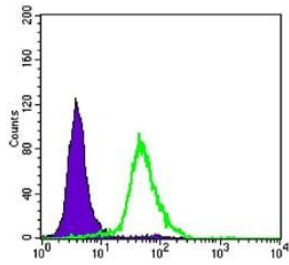
Western blot analysis using CRTC2 mouse mAb against Hela (1) and HEK293 (2) cell lysate.



Immunohistochemical analysis of paraffin-embedded ovary tumour tissues (left) and lung cancer (right) using CRTC2 mouse mAb with DAB staining.



Immunofluorescence analysis of Hela cells using CRTC2 mouse mAb (green). Blue: DRAQ5 fluorescent DNA dye. Red: Actin filaments have been labeled with Alexa Fluor-555 phalloidin.



Flow cytometric analysis of HeLa cells using CRTC2 mouse mAb (green) and negative control (purple).

Storage

Store at 4°C short term. Aliquot and store at -20°C long term.

501 Changsheng S Rd, Nanhu Dist, Jiaxing, Zhejiang, China

Tel: 86 21 31007137 | E-mail: save@bt-laboratory.com | www.bt-laboratory.com