

PAX6 Monoclonal Antibody

Description

Product type	Antibody
Code	BT-MCA3795
Host	Mouse
Isotype	Mouse IgG1
Size	100µL, 50µL
Immunogen	Purified recombinant fragment of human PAX6 expressed in E. Coli.
Mol wt	46kDa
Species reactivity	Human
Clonality	Monoclonal
Recommended application	FCM
Concentration	N/A
Full name	N/A
Synonyms	AN;AN2;MGDA;WAGR;D11S812E;MGC17209;PAX6

This product is for research use only, not for use in human, therapeutic or diagnostic procedure.

Background

Transcription factor with important functions in the development of the eye, nose, central nervous system and pancreas. Required for the differentiation of pancreatic islet alpha cells .PAX6 is the most researched of the PAX genes and appears throughout the literature as a "master control" gene for the development of eyes and other sensory organs, certain neural and epidermal tissues as well as other homologous structures, usually derived from ectodermal tissues. This transcription factor is most famous for its use in the interspecifically induced expression of ectopic eyes and is of medical importance because heterozygous mutants produce a wide spectrum of ocular defects such as Aniridia in humans. This gene encodes paired box gene 6, one of many human homologues of the Drosophila melanogaster gene *prd*. In addition to the hallmark feature of this gene family, a conserved paired box domain, the encoded protein also contains a homeo box domain. Both domains are known to bind DNA, and function as regulators of gene transcription. This gene is expressed in the developing nervous system, and in developing eyes. Mutations in this gene are known to cause aniridia as well as Peter's anomaly, both ocular diseases.

Recommended Dilution

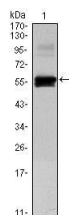
WB: 1:500 - 1:2000

FCM: 1:200 - 1:400

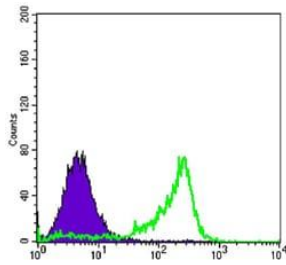
ELISA: 1:10000

Not yet tested in other applications.

Images



Western blot analysis using PAX6 mAb against human PAX6 (AA: 1-223) recombinant protein.
(Expected MW is 50 kDa)



Flow cytometric analysis of 3T3-L1 cells using PAX6 mouse mAb (green) and negative control (purple).

Storage

Store at 4°C short term. Aliquot and store at -20°C long term.

501 Changsheng S Rd, Nanhu Dist, Jiaxing, Zhejiang, China

Tel: 86 21 31007137 | E-mail: save@bt-laboratory.com | www.bt-laboratory.com