

## PRDM1 Monoclonal Antibody

### Description

<b>Product type</b>	Antibody
<b>Code</b>	BT-MCA3821
<b>Host</b>	Mouse
<b>Isotype</b>	Mouse IgG1
<b>Size</b>	100µL, 50µL
<b>Immunogen</b>	Purified recombinant fragment of human PRDM1 expressed in E. Coli.
<b>Mol wt</b>	88kDa
<b>Species reactivity</b>	Human,Mouse
<b>Clonality</b>	Monoclonal
<b>Recommended application</b>	WB
<b>Concentration</b>	N/A
<b>Full name</b>	N/A
<b>Synonyms</b>	BLIMP1;PRDI-BF1;MGC118922;MGC118923;MGC118924;MGC118925;PRDM1

This product is for research use only, not for use in human, therapeutic or diagnostic procedure.

### Background

PRDM1/Blimp1 is a repressor of beta-interferon gene expression. This action is exerted by binding to the PRDI (positive regulatory domain I element) of the beta-IFN gene promoter. The transcription of this gene is increased upon virus induction. Two alternatively spliced transcript variants that encode different isoforms have been reported.

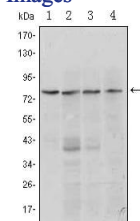
### Recommended Dilution

WB: 1:500 - 1:2000

ELISA: 1:10000

Not yet tested in other applications.

### Images



Western blot analysis using PRDM1 mouse mAb against Raji (1, 2), L1210 (3) and TPH-1 (4) cell lysate.

### Storage

Store at 4°C short term. Aliquot and store at -20°C long term.