

## FES Monoclonal Antibody

### Description

Product type	Antibody
Code	BT-MCA3864
Host	Mouse
Isotype	Mouse IgG1
Size	100µL, 50µL
Immunogen	Purified recombinant fragment of FES (AA:613-822)expressed in E. Coli.
Mol wt	N/A
Species reactivity	Human
Clonality	Monoclonal
Recommended application	IHC
Concentration	N/A
Full name	N/A
Synonyms	FPS

This product is for research use only, not for use in human, therapeutic or diagnostic procedure.

### Background

FES (feline sarcoma oncogene) and Fer are the only two members of a unique family of cytoplasmic protein tyrosine kinases. FES and Fer contain a central Src homology-2 (SH2) domain and a carboxy-terminal tyrosine kinase catalytic domain. They are structurally distinguished from other members of cytoplasmic protein tyrosine kinase subfamilies by the presence of amino-terminal Fer/CIP4 homology and coiled-coil domains. FES was originally identified as an oncogene from avian and feline retroviruses. Human c-Fes has been implicated in myeloid, vascular endothelial and neuronal cell differentiation. FES has tyrosine-specific protein kinase activity and that activity is required for maintenance of cellular transformation. Mutations may activate the FES kinase and thereby contribute to cancer. However, recent data strongly suggests that the c-FES protein-tyrosine kinase is a tumor suppressor rather than a dominant oncogene in colorectal cancer.

### Recommended Dilution

WB: 1:500 - 1:2000

IHC-p: 1:200 - 1:1000

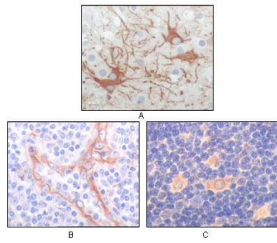
ELISA: 1:10000

Not yet tested in other applications.

### Images



Western blot analysis using FES mouse mAb against truncated FES recombinant protein.



Immunohistochemical analysis of paraffin-embedded human cerebrum tumor (A), endothelium of vessel (B), lymphocyte of thymus(C), showing cytoplasmic localization using FES mouse mAb with DAB staining.

### Storage

Store at 4°C short term. Aliquot and store at -20°C long term.

501 Changsheng S Rd, Nanhu Dist, Jiaxing, Zhejiang, China

Tel: 86 21 31007137 | E-mail: [save@bt-laboratory.com](mailto:save@bt-laboratory.com) | [www.bt-laboratory.com](http://www.bt-laboratory.com)