

CBX1 Monoclonal Antibody

Description

Product type	Antibody
Code	BT-MCA3914
Host	Mouse
Isotype	Mouse IgG1
Size	100µL, 50µL
Immunogen	Purified recombinant fragment of human CBX1 expressed in E. Coli.
Mol wt	21kDa
Species reactivity	Human,Monkey
Clonality	Monoclonal
Recommended application	WB,ICC,FCM
Concentration	N/A
Full name	N/A
Synonyms	CBX;M31;MOD1;p25beta;HP1-BETA;HP1Hsbeta;HP1Hs-beta;CBX1

This product is for research use only, not for use in human, therapeutic or diagnostic procedure.

Background

This gene encodes a highly conserved nonhistone protein, which is a member of the heterochromatin protein family. The protein is enriched in the heterochromatin and associated with centromeres. The protein has a single N-terminal chromodomain which can bind to histone proteins via methylated lysine residues, and a C-terminal chromo shadow-domain (CSD) which is responsible for the homodimerization and interaction with a number of chromatin-associated nonhistone proteins. The protein may play an important role in the epigenetic control of chromatin structure and gene expression. Several related pseudogenes are located on chromosomes 1, 3, and X. Multiple alternatively spliced variants, encoding the same protein, have been identified.

Recommended Dilution

WB: 1:500 - 1:2000

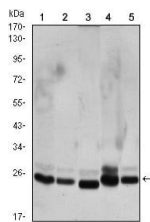
ICC: 1:200 - 1:1000

FCM: 1:200 - 1:400

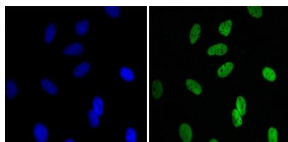
ELISA: 1:10000

Not yet tested in other applications.

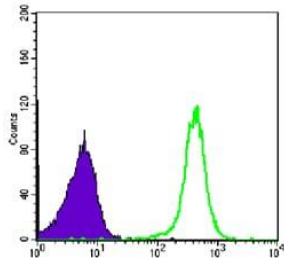
Images



Western blot analysis using CBX1 mouse mAb against HeLa (1), COS7 (2), NIH/3T3 (3), A431 (4), and C6 (5) cell lysate.



Immunofluorescence analysis of HeLa cells using CBX1 mouse mAb (green). Blue: DRAQ5 fluorescent DNA dye.



Flow cytometric analysis of COS7 cells using CBX1 mouse mAb (green) and negative control (purple).

Storage

Store at 4°C short term. Aliquot and store at -20°C long term.

501 Changsheng S Rd, Nanhu Dist, Jiaxing, Zhejiang, China

Tel: 86 21 31007137 | E-mail: save@bt-laboratory.com | www.bt-laboratory.com