

CHK1 Monoclonal Antibody

Description

Product type	Antibody
Code	BT-MCA3955
Host	Mouse
Isotype	Mouse IgG1
Size	100µL, 50µL
Immunogen	Purified recombinant fragment of CHK1 expressed in E. Coli.
Mol wt	56kDa
Species reactivity	Human,Mouse
Clonality	Monoclonal
Recommended application	WB
Concentration	N/A
Full name	N/A
Synonyms	CHEK1

This product is for research use only, not for use in human, therapeutic or diagnostic procedure.

Background

CHK1, also known as CHEK1, it is a kinase that phosphorylates cdc25, an important phosphatase in cell cycle control, particularly for entry into mitosis. Cdc25, when phosphorylated on serine 216 by chk1 becomes bound by an adaptor protein in the cytoplasm. Therefore it is inhibited from removing the inhibiting phosphate from MPF (mitotic/maturation promoting factor) added by Wee1. Consequently, a cell is prevented from entering mitosis. Chk1 can also phosphorylate p53 at Ser20 in vitro.

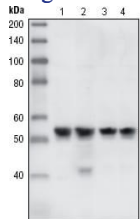
Recommended Dilution

WB: 1:500 - 1:2000

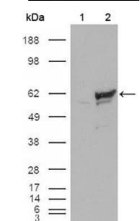
ELISA: 1:10000

Not yet tested in other applications.

Images



Western blot analysis using CHK1 mouse mAb against A431 (1), HeLa (2), NIH/3T3 (3) and K562 (4) cell lysate.



Western blot analysis using CHK1 mouse mAb against HEK293T cells transfected with the pCMV6-ENTRY control (1) and pCMV6-ENTRY CHK1 cDNA (2).

Storage

Store at 4°C short term. Aliquot and store at -20°C long term.

501 Changsheng S Rd, Nanhu Dist, Jiaxing, Zhejiang, China

Tel: 86 21 31007137 | E-mail: save@bt-laboratory.com | www.bt-laboratory.com