

## IL6 Monoclonal Antibody

### Description

Product type	Antibody
Code	BT-MCA4018
Host	Mouse
Isotype	Mouse IgG2b
Size	100µL, 50µL
Immunogen	N/A
Mol wt	23.7kDa
Species reactivity	Human,Mouse,Rat,Rabbit
Clonality	Monoclonal
Recommended application	IHC,FCM
Concentration	N/A
Full name	N/A
Synonyms	CDF;HGF;HSF;BSF2;IL-6;BSF-2;IFNB2;IFN-beta-2

This product is for research use only, not for use in human, therapeutic or diagnostic procedure.

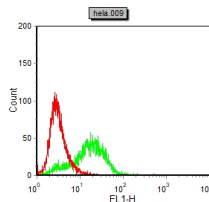
### Background

This gene encodes a cytokine that functions in inflammation and the maturation of B cells. In addition, the encoded protein has been shown to be an endogenous pyrogen capable of inducing fever in people with autoimmune diseases or infections. The protein is primarily produced at sites of acute and chronic inflammation, where it is secreted into the serum and induces a transcriptional inflammatory response through interleukin 6 receptor, alpha. The functioning of this gene is implicated in a wide variety of inflammation-associated disease states, including susceptibility to diabetes mellitus and systemic juvenile rheumatoid arthritis. Elevated levels of the encoded protein have been found in virus infections, including COVID-19

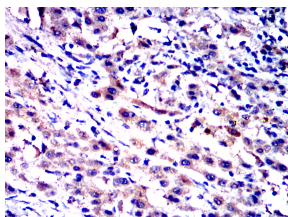
### Recommended Dilution

Not yet tested in other applications.

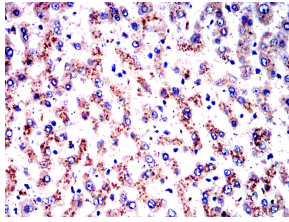
### Images



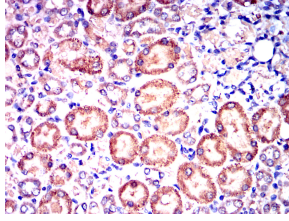
Flow cytometric analysis of HeLa cells using IL6 mouse mAb (green) and negative control (red).



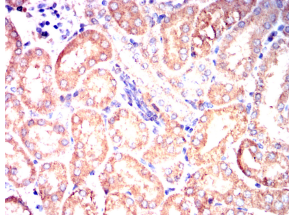
Immunohistochemical analysis of paraffin-embedded human liver cancer tissues using IL6 mouse mAb with DAB staining.



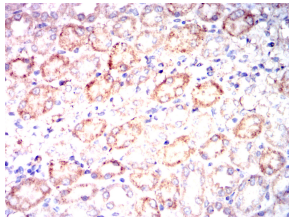
Immunohistochemical analysis of paraffin-embedded human liver tissues using IL6 mouse mAb with DAB staining.



Immunohistochemical analysis of paraffin-embedded rat kidney tissues using IL6 mouse mAb with DAB staining.



Immunohistochemical analysis of paraffin-embedded mouse kidney tissues using IL6 mouse mAb with DAB staining.



Immunohistochemical analysis of paraffin-embedded rabbit kidney tissues using IL6 mouse mAb with DAB staining.

### Storage

Store at 4°C short term. Aliquot and store at -20°C long term.

501 Changsheng S Rd, Nanhu Dist, Jiaxing, Zhejiang, China

Tel: 86 21 31007137 | E-mail: [save@bt-laboratory.com](mailto:save@bt-laboratory.com) | [www.bt-laboratory.com](http://www.bt-laboratory.com)