

ARHGDIA Monoclonal Antibody

Description

Product type	Antibody
Code	BT-MCA4082
Host	Mouse
Isotype	Mouse IgG1
Size	100µL, 50µL
Immunogen	Purified recombinant fragment of human ARHGDIA (AA: FULL(1-204)) expressed in E. Coli.
Mol wt	26kDa
Species reactivity	Human,Mouse,Monkey
Clonality	Monoclonal
Recommended application	WB,ICC,FCM
Concentration	N/A
Full name	N/A
Synonyms	GDIA1;RHOGDI;RHOGDI-1

This product is for research use only, not for use in human, therapeutic or diagnostic procedure.

Background

Aplysia Ras-related homologs (ARHs), also called Rho genes, belong to the RAS gene superfamily encoding small guanine nucleotide exchange (GTP/GDP) factors. The ARH proteins may be kept in the inactive, GDP-bound state by interaction with GDP dissociation inhibitors, such as ARHGDIA

Recommended Dilution

WB: 1:500 - 1:2000

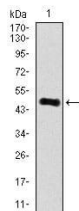
ICC: 1:200 - 1:1000

FCM: 1:200 - 1:400

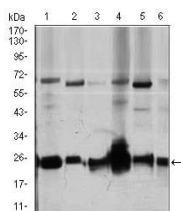
ELISA: 1:10000

Not yet tested in other applications.

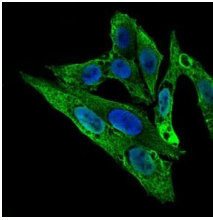
Images



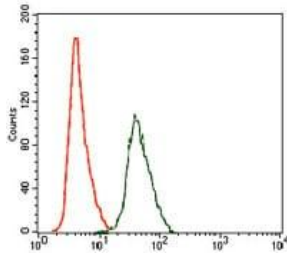
Western blot analysis using ARHGDIA mAb against human ARHGDIA recombinant protein.
(Expected MW is 48.7 kDa)



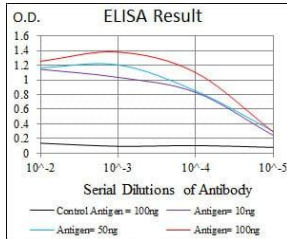
Western blot analysis using ARHGDIA mouse mAb against Jurkat (1), HeLa (2), NIH3T3 (3), C6 (4), K562 (5), and COS7 (6) cell lysate.



Immunofluorescence analysis of HepG2 cells using ARHGDI2 mouse mAb (green). Blue: DRAQ5 fluorescent DNA dye.



Flow cytometric analysis of HeLa cells using ARHGDI2 mouse mAb (green) and negative control (red).



Black line: Control Antigen (100 ng); Purple line: Antigen(10ng); Blue line: Antigen (50 ng); Red line: Antigen (100 ng);

Storage

Store at 4°C short term. Aliquot and store at -20°C long term.

501 Changsheng S Rd, Nanhu Dist, Jiaxing, Zhejiang, China

Tel: 86 21 31007137 | E-mail: save@bt-laboratory.com | www.bt-laboratory.com