

SST Monoclonal Antibody

Description

Product type	Antibody
Code	BT-MCA4119
Host	Mouse
Isotype	Mouse IgG1
Size	100µL, 50µL
Immunogen	Purified recombinant fragment of human SST (AA: 1-116) expressed in E. Coli.
Mol wt	12.7kDa
Species reactivity	Human
Clonality	Monoclonal
Recommended application	IHC,FCM
Concentration	N/A
Full name	N/A
Synonyms	SMST

This product is for research use only, not for use in human, therapeutic or diagnostic procedure.

Background

The preproprotein encoded by this gene. Somatostatin is expressed throughout the body and inhibits the release of numerous secondary hormones by binding to high-affinity G-protein-coupled somatostatin receptors. This hormone is an important regulator of the endocrine system through its interactions with pituitary growth hormone, thyroid stimulating hormone, and most hormones of the gastrointestinal tract. Somatostatin also affects rates of neurotransmission in the central nervous system and proliferation of both normal and tumorigenic cells.

Recommended Dilution

WB: 1:500 - 1:2000

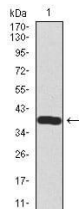
IHC-p: 1:200 - 1:1000

FCM: 1:200 - 1:400

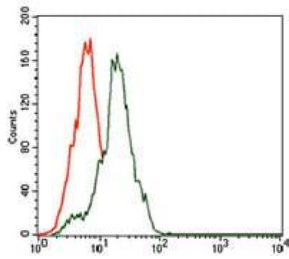
ELISA: 1:10000

Not yet tested in other applications.

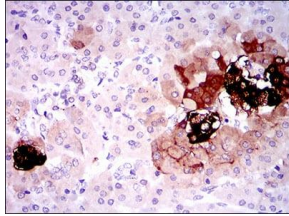
Images



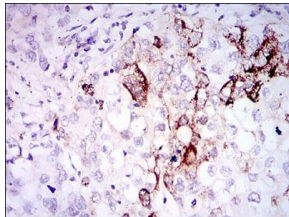
Western blot analysis using SST mAb against human SST recombinant protein. (Expected MW is 38.2 kDa)



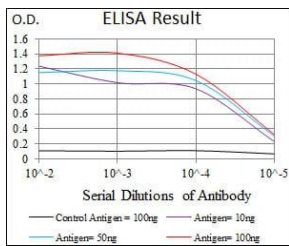
Flow cytometric analysis of HepG2 cells using SST mouse mAb (green) and negative control (red).



Immunohistochemical analysis of paraffin-embedded pancreas tissues using SST mouse mAb with DAB staining.



Immunohistochemical analysis of paraffin-embedded lung cancer tissues using SST mouse mAb with DAB staining.



Black line: Control Antigen (100 ng); Purple line: Antigen(10ng); Blue line: Antigen (50 ng); Red line: Antigen (100 ng);

Storage

Store at 4°C short term. Aliquot and store at -20°C long term.

501 Changsheng S Rd, Nanhu Dist, Jiaxing, Zhejiang, China

Tel: 86 21 31007137 | E-mail: save@bt-laboratory.com | www.bt-laboratory.com