

## CREB1 Monoclonal Antibody

### Description

<b>Product type</b>	Antibody
<b>Code</b>	BT-MCA4133
<b>Host</b>	Mouse
<b>Isotype</b>	Mouse IgG1
<b>Size</b>	100µL, 50µL
<b>Immunogen</b>	Purified recombinant fragment of human CREB1 expressed in E. Coli.
<b>Mol wt</b>	43kDa
<b>Species reactivity</b>	Human,Mouse,Rat,Monkey
<b>Clonality</b>	Monoclonal
<b>Recommended application</b>	WB,IHC,ICC
<b>Concentration</b>	N/A
<b>Full name</b>	N/A
<b>Synonyms</b>	CREB;MGC9284;CREB1

This product is for research use only, not for use in human, therapeutic or diagnostic procedure.

### Background

This gene encodes a transcription factor that is a member of the leucine zipper family of DNA binding proteins. This protein binds as a homodimer to the cAMP-responsive element, an octameric palindrome. The protein is phosphorylated by several protein kinases, and induces transcription of genes in response to hormonal stimulation of the cAMP pathway. Alternate splicing of this gene results in two transcript variants encoding different isoforms. (provided by RefSeq)

### Recommended Dilution

WB: 1:500 - 1:2000

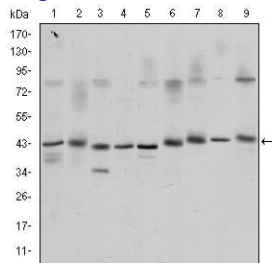
IHC-p: 1:200 - 1:1000

ICC: 1:200 - 1:1000

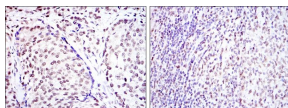
ELISA: 1:10000

Not yet tested in other applications.

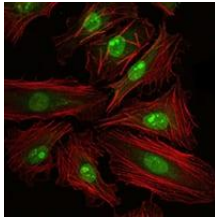
### Images



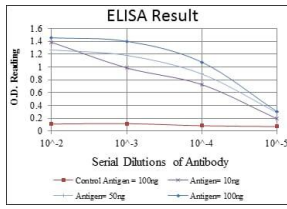
Western blot analysis using CREB1 mouse mAb against K562 (1), Jurkat (2), L1210 (3), HEK293 (4), A431 (5), HeLa (6), Cos7 (7), PC-12 (8), and NIH/3T3 (9) cell lysate.



Immunohistochemical analysis of paraffin-embedded prostate cancer tissues (left) and submaxillary tumor tissues (right) using CREB1 mouse mAb with DAB staining.



Immunofluorescence analysis of HeLa cells using CREB1 mouse mAb (green). Red: Actin filaments have been labeled with Alexa Fluor-555 phalloidin.



Red: Control Antigen (100ng); Purple: Antigen (10ng); Green: Antigen (50ng); Blue: Antigen (100ng);

## Storage

Store at 4°C short term. Aliquot and store at -20°C long term.

501 Changsheng S Rd, Nanhui Dist, Jiading, Zhejiang, China

Tel: 86 21 31007137 | E-mail: [save@bt-laboratory.com](mailto:save@bt-laboratory.com) | [www.bt-laboratory.com](http://www.bt-laboratory.com)