

HSP90AA1 Monoclonal Antibody

Description

Product type	Antibody
Code	BT-MCA4180
Host	Mouse
Isotype	Mouse IgG1
Size	100µL, 50µL
Immunogen	Purified recombinant fragment of human HSP90AA1 expressed in E. Coli.
Mol wt	90kDa
Species reactivity	Human,Mouse,Monkey
Clonality	Monoclonal
Recommended application	WB,IHC,FCM
Concentration	N/A
Full name	N/A
Synonyms	HSPN;LAP2;HSP86;HSPC1;HSPCA;Hsp89;Hsp90;HSP89A;HSP90A;HSP90N;HSPCAL1;HSPCAL4

This product is for research use only, not for use in human, therapeutic or diagnostic procedure.

Background

HSP90 proteins are highly conserved molecular chaperones that have key roles in signal transduction, protein folding, protein degradation, and morphologic evolution. HSP90 proteins normally associate with other cochaperones and play important roles in folding newly synthesized proteins or stabilizing and refolding denatured proteins after stress. There are 2 major cytosolic HSP90 proteins, HSP90AA1, an inducible form, and HSP90AB1 (MIM 140572), a constitutive form. Other HSP90 proteins are found in endoplasmic reticulum (HSP90B1; MIM 191175) and mitochondria (TRAP1; MIM 606219) (Chen et al., 2005 [PubMed 16269234]).

Recommended Dilution

WB: 1:500 - 1:2000

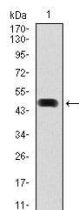
IHC-p: 1:200 - 1:1000

FCM: 1:200 - 1:400

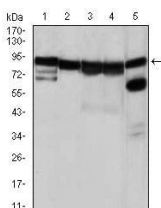
ELISA: 1:10000

Not yet tested in other applications.

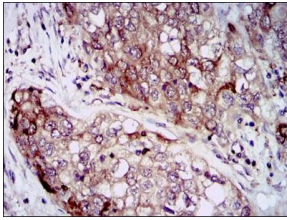
Images



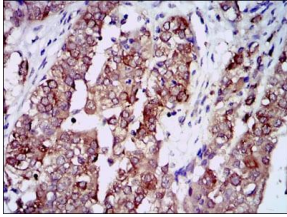
Western blot analysis using HSP90AA1 mAb against human HSP90AA1 (AA: 275-484) recombinant protein. (Expected MW is 50.5 kDa)



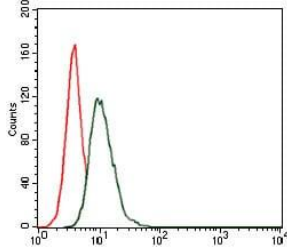
Western blot analysis using HSP90AA1 mouse mAb against NIH3T3 (1), HeLa (2), HCT116(3), HL-60 (4) and COS7 (5) cell lysate.



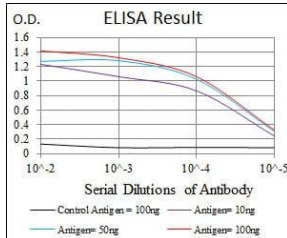
Immunohistochemical analysis of paraffin-embedded lung cancer tissues using HSP90AA1 mouse mAb with DAB staining.



Immunohistochemical analysis of paraffin-embedded bladder cancer tissues using HSP90AA1 mouse mAb with DAB staining.



Flow cytometric analysis of HeLa cells using HSP90AA1 mouse mAb (green) and negative control (red).



Black line: Control Antigen (100 ng); Purple line: Antigen(10ng); Blue line: Antigen (50 ng); Red line: Antigen (100 ng);

Storage

Store at 4°C short term. Aliquot and store at -20°C long term.

501 Changsheng S Rd, Nanhu Dist, Jiaxing, Zhejiang, China

Tel: 86 21 31007137 | E-mail: save@bt-laboratory.com | www.bt-laboratory.com