

HER-2 Monoclonal Antibody

Description

Product type	Antibody
Code	BT-MCA4242
Host	Mouse
Isotype	Mouse IgG2b
Size	100µL, 50µL
Immunogen	Purified recombinant fragment of HER-2 expressed in E. Coli.
Mol wt	N/A
Species reactivity	Human
Clonality	Monoclonal
Recommended application	IHC
Concentration	N/A
Full name	N/A
Synonyms	HER-2, C-erbB-2, erbB-2

This product is for research use only, not for use in human, therapeutic or diagnostic procedure.

Background

The C-erbB-2 (HER-2/neu) gene encodes a member of the epidermal growth factor (EGF) receptor family of receptor tyrosine kinases. Amplification or overexpression of this gene has been reported in numerous cancers, including breast and ovarian tumors. High levels of c-erbB-2 were associated with estrogen receptor (ER) and progesterone receptor negativity. Overexpression of the c-erbB-2 oncogene has been shown to be associated with poor prognosis in ovarian and breast cancer. The level of increased Neu expression can be a predictor of disease prognosis.

Recommended Dilution

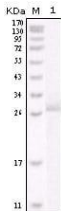
WB: 1:500 - 1:2000

IHC-p: 1:200 - 1:1000

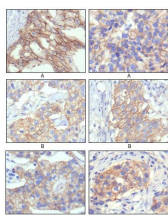
ELISA: 1:10000

Not yet tested in other applications.

Images



Western blot analysis using HER-2 mouse mAb against truncated HER-2 recombinant protein.



Immunohistochemical analysis of paraffin-embedded human breast intraductal carcinoma tissue(A) and breast infiltrating ductal carcinoma tissue(B) showing membrane localization using HER-2 mouse mAb with DAB staining.

Storage

Store at 4°C short term. Aliquot and store at -20°C long term.

501 Changsheng S Rd, Nanhu Dist, Jiaxing, Zhejiang, China

Tel: 86 21 31007137 | E-mail: save@bt-laboratory.com | www.bt-laboratory.com