

NAPSA Monoclonal Antibody

Description

Product type	Antibody
Code	BT-MCA4257
Host	Mouse
Isotype	Mouse IgG1
Size	100µL, 50µL
Immunogen	Purified recombinant fragment of human NAPSA (AA: 20-158) expressed in E. Coli.
Mol wt	45.4kDa
Species reactivity	Human,Rat
Clonality	Monoclonal
Recommended application	WB,IHC
Concentration	N/A
Full name	N/A
Synonyms	KAP;Kdap;NAP1;NAPA;SNAPA

This product is for research use only, not for use in human, therapeutic or diagnostic procedure.

Background

N/A

Recommended Dilution

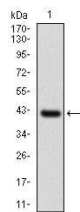
WB: 1:500 - 1:2000

IHC-p: 1:200 - 1:1000

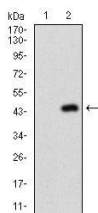
ELISA: 1:10000

Not yet tested in other applications.

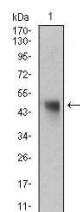
Images



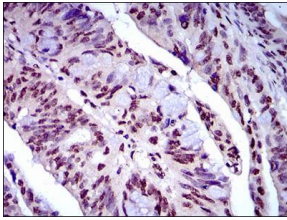
Western blot analysis using NAPSA mAb against human NAPSA recombinant protein. (Expected MW is 40.9 kDa)



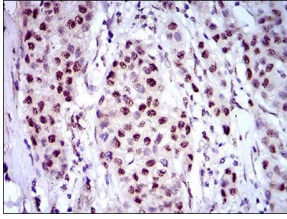
Western blot analysis using NAPSA mAb against HEK293 (1) and NAPSA (AA: 20-158)-hIgGFc transfected HEK293 (2) cell lysate.



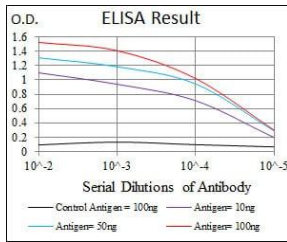
Western blot analysis using NAPSA mouse mAb against rat liver tissue lysate.



Immunohistochemical analysis of paraffin-embedded rectum cancer tissues using NAPSA mouse mAb with DAB staining.



Immunohistochemical analysis of paraffin-embedded liver cancer tissues using NAPSA mouse mAb with DAB staining.



Black line: Control Antigen (100 ng); Purple line: Antigen(10ng); Blue line: Antigen (50 ng); Red line: Antigen (100 ng);

Storage

Store at 4°C short term. Aliquot and store at -20°C long term.

501 Changsheng S Rd, Nanhu Dist, Jiaxing, Zhejiang, China

Tel: 86 21 31007137 | E-mail: save@bt-laboratory.com | www.bt-laboratory.com