

PDK1 Monoclonal Antibody

Description

| | |
|--------------------------------|---|
| Product type | Antibody |
| Code | BT-MCA4278 |
| Host | Mouse |
| Isotype | Mouse IgG1 |
| Size | 100µL, 50µL |
| Immunogen | Purified recombinant fragment of human PDK1 expressed in E. Coli. |
| Mol wt | 44kDa |
| Species reactivity | Human,Monkey,Rat |
| Clonality | Monoclonal |
| Recommended application | WB,IHC,ICC,FCM |
| Concentration | N/A |
| Full name | N/A |
| Synonyms | PDK1 |

This product is for research use only, not for use in human, therapeutic or diagnostic procedure.

Background

Pyruvate dehydrogenase (PDH) is a mitochondrial multienzyme complex that catalyzes the oxidative decarboxylation of pyruvate and is one of the major enzymes responsible for the regulation of homeostasis of carbohydrate fuels in mammals. The enzymatic activity is regulated by a phosphorylation/dephosphorylation cycle. Phosphorylation of PDH by a specific pyruvate dehydrogenase kinase (PDK) results in inactivation. (provided by RefSeq). Tissue specificity: Expressed predominantly in the heart.

Recommended Dilution

WB: 1:500 - 1:2000

IHC-p: 1:200 - 1:1000

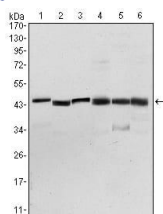
ICC: 1:200 - 1:1000

FCM: 1:200 - 1:400

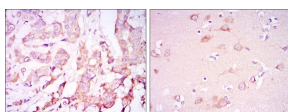
ELISA: 1:10000

Not yet tested in other applications.

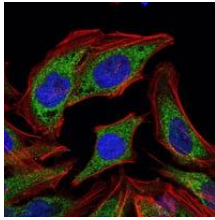
Images



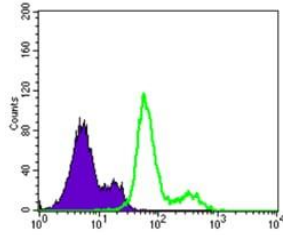
Western blot analysis using PDK1 mouse mAb against NIH/3T3 (1), HeLa (2), Jurkat (3), HepG2 (4), PC-12 (5), and Cos7 (6) cell lysate.



Immunohistochemical analysis of paraffin-embedded breast cancer tissues (left) and brain tissues (right) using PDK1 mouse mAb with DAB staining.



Immunofluorescence analysis of HELA cells using PDK1 mouse mAb (green). Blue: DRAQ5 fluorescent DNA dye. Red: Actin filaments have been labeled with Alexa Fluor-555 phalloidin.



Flow cytometric analysis of Lovo cells using PDK1 mouse mAb (green) and negative control (purple).

Storage

Store at 4°C short term. Aliquot and store at -20°C long term.

501 Changsheng S Rd, Nanhu Dist, Jiaxing, Zhejiang, China

Tel: 86 21 31007137 | E-mail: save@bt-laboratory.com | www.bt-laboratory.com