

## ER Monoclonal Antibody

### Description

<b>Product type</b>	Antibody
<b>Code</b>	BT-MCA4284
<b>Host</b>	Mouse
<b>Isotype</b>	Mouse IgG2b
<b>Size</b>	100µL, 50µL
<b>Immunogen</b>	Purified recombinant fragment of ER expressed in E. Coli.
<b>Mol wt</b>	N/A
<b>Species reactivity</b>	Human
<b>Clonality</b>	Monoclonal
<b>Recommended application</b>	WB
<b>Concentration</b>	N/A
<b>Full name</b>	N/A
<b>Synonyms</b>	ER;ESR;Era;ESRA;NR3A1;DKFZp686N23123;ESR1

**This product is for research use only, not for use in human, therapeutic or diagnostic procedure.**

### Background

ER (estrogen receptor 1) a member of the steroid receptor superfamily, contains highly conserved DNA binding (DBD) and ligand binding domains (LBD). Through its estrogen-independent and estrogen-dependent activation domains (AF-1 and AF-2, respectively), ER regulates transcription by recruiting coactivator proteins and interacting with general transcriptional machinery. Phosphorylation provides an important mechanism to regulate ER activity. ER is phosphorylated on multiple sites. Serines 104, 106, 118 and 167 are located in the amino-terminal transcription activation function domain AF-1, and phosphorylation of these serines plays an important role in regulating ER activity. Ser118 may be the substrate of the transcription regulatory kinase cdk7. Ser167 may be phosphorylated by p90RSK and Akt. Phosphorylation of Ser167 may confer tamoxifen resistance in breast cancer patients.

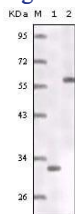
### Recommended Dilution

WB: 1:500 - 1:2000

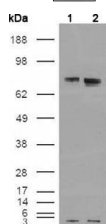
ELISA: 1:10000

Not yet tested in other applications.

### Images



Western blot analysis using ER mouse mAb truncated ER recombinant protein (1) MCF-7 cell lysates (2).



Western blot analysis using ER mouse mAb against HEK293T cells transfected with the pCMV6-ENTRY control (1) and pCMV6-ENTRY ER cDNA (2).

## Storage

Store at 4°C short term. Aliquot and store at -20°C long term.

501 Changsheng S Rd, Nanhu Dist, Jiaxing, Zhejiang, China

Tel: 86 21 31007137 | E-mail: [save@bt-laboratory.com](mailto:save@bt-laboratory.com) | [www.bt-laboratory.com](http://www.bt-laboratory.com)