

MSH6 Monoclonal Antibody

Description

Product type	Antibody
Code	BT-MCA4287
Host	Mouse
Isotype	Mouse IgG1
Size	100 μ L, 50 μ L
Immunogen	Purified recombinant fragment of MSH6 expressed in E. Coli.
Mol wt	N/A
Species reactivity	Human
Clonality	Monoclonal
Recommended application	Others
Concentration	N/A
Full name	N/A
Synonyms	GTBP;HSAP;HNPCC5

This product is for research use only, not for use in human, therapeutic or diagnostic procedure.

Background

Defects in MSH6 are a cause of hereditary non-polyposis colorectal cancer (HNPCC) (Lynch syndrome). HNPCC is an autosomal, dominantly inherited disease associated with marked increase in cancer susceptibility. It is characterized by a familial predisposition to early onset colorectal carcinoma (crc) and extra-colonic cancers of the gastrointestinal, urological and female reproductive tracts. HNPCC is reported to be the most common form of inherited colorectal cancer in the western world. MSH6 is central to mismatch DNA repair.

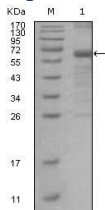
Recommended Dilution

WB: 1:500 - 1:2000

ELISA: 1:10000

Not yet tested in other applications.

Images



Western blot analysis using MSH6 mouse mAb against truncated MSH6 recombinant protein.

Storage

Store at 4°C short term. Aliquot and store at -20°C long term.