

## G6PD Monoclonal Antibody

### Description

<b>Product type</b>	Antibody
<b>Code</b>	BT-MCA4353
<b>Host</b>	Mouse
<b>Isotype</b>	Mouse IgG1
<b>Size</b>	100μL, 50μL
<b>Immunogen</b>	Purified recombinant fragment of human G6PD expressed in E. Coli.
<b>Mol wt</b>	59kDa
<b>Species reactivity</b>	Human
<b>Clonality</b>	Monoclonal
<b>Recommended application</b>	WB,IHC,FCM
<b>Concentration</b>	N/A
<b>Full name</b>	N/A
<b>Synonyms</b>	G6PD1

This product is for research use only, not for use in human, therapeutic or diagnostic procedure.

### Background

This gene encodes glucose-6-phosphate dehydrogenase. This protein is a cytosolic enzyme encoded by a housekeeping X-linked gene whose main function is to produce NADPH, a key electron donor in the defense against oxidizing agents and in reductive biosynthetic reactions. G6PD is remarkable for its genetic diversity. Many variants of G6PD, mostly produced from missense mutations, have been described with wide ranging levels of enzyme activity and associated clinical symptoms. G6PD deficiency may cause neonatal jaundice, acute hemolysis, or severe chronic non-spherocytic hemolytic anemia. Two transcript variants encoding different isoforms have been found for this gene.

### Recommended Dilution

WB: 1:500 - 1:2000

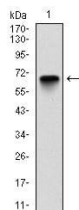
IHC-p: 1:200 - 1:1000

FCM: 1:200 - 1:400

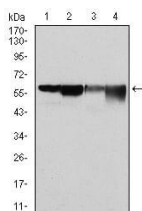
ELISA: 1:10000

Not yet tested in other applications.

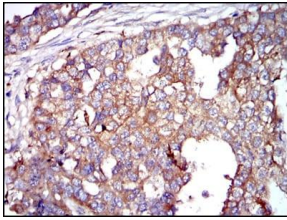
### Images



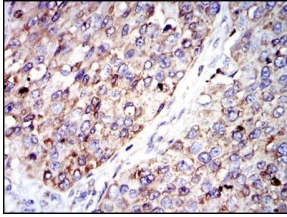
Western blot analysis using G6PD mAb against human G6PD (AA: 275-515) recombinant protein.  
(Expected MW is 53.1 kDa)



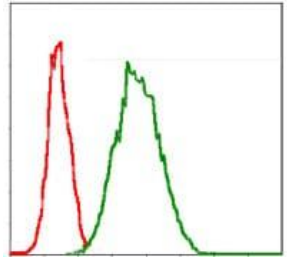
Western blot analysis using G6PD mouse mAb against Hela (1), MCF-7 (2), Jurkat (3) and K562 (4) cell lysate.



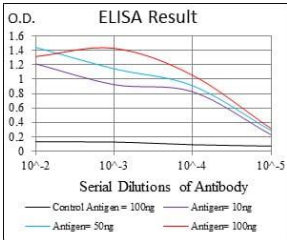
Immunohistochemical analysis of paraffin-embedded breast cancer tissues using G6PD mouse mAb with DAB staining.



Immunohistochemical analysis of paraffin-embedded kidney cancer tissues using G6PD mouse mAb with DAB staining.



Flow cytometric analysis of Jurkat cells using G6PD mouse mAb (green) and negative control (red).



Black line: Control Antigen (100 ng); Purple line: Antigen(10ng); Blue line: Antigen (50 ng); Red line: Antigen (100 ng);

## Storage

Store at 4°C short term. Aliquot and store at -20°C long term.

501 Changsheng S Rd, Nanhu Dist, Jiaxing, Zhejiang, China

Tel: 86 21 31007137 | E-mail: [save@bt-laboratory.com](mailto:save@bt-laboratory.com) | [www.bt-laboratory.com](http://www.bt-laboratory.com)