

CD31 Monoclonal Antibody

Description

Product type	Antibody
Code	BT-MCA4383
Host	Mouse
Isotype	Mouse IgG1
Size	100µL, 50µL
Immunogen	Purified recombinant fragment of human CD31 expressed in E. Coli.
Mol wt	N/A
Species reactivity	Human
Clonality	Monoclonal
Recommended application	IHC,ICC
Concentration	N/A
Full name	N/A
Synonyms	CD31;PECAM-1;PECAM1

This product is for research use only, not for use in human, therapeutic or diagnostic procedure.

Background

CD31, also known as platelet endothelial cell adhesion molecule 1 (PECAM1), is a type I integral membrane glycoprotein and a member of the immunoglobulin superfamily of cell surface receptors. It is constitutively expressed on the surface of endothelial cells, and concentrated at the junction between them. The antibody reacts with the murine form of the Platelet-Endothelial Cell Adhesion Molecule. The reactivity of the antibody is restricted to the isoform of the molecule that is selectively expressed by endothelial cells. The antigen is predominantly present at the lateral borders of endothelial cells as described for human PECAM-1. It is also weakly expressed on many peripheral lymphoid cells and platelets. CD31 has been used to measure angiogenesis in association with tumor recurrence. Other studies have also indicated that CD31 and CD34 can be used as markers for myeloid progenitor cells and recognize different subsets of myeloid leukemia infiltrates (granular sarcomas).

Recommended Dilution

WB: 1:500 - 1:2000

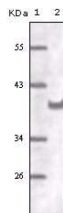
IHC-p: 1:200 - 1:1000

ICC: 1:200 - 1:1000

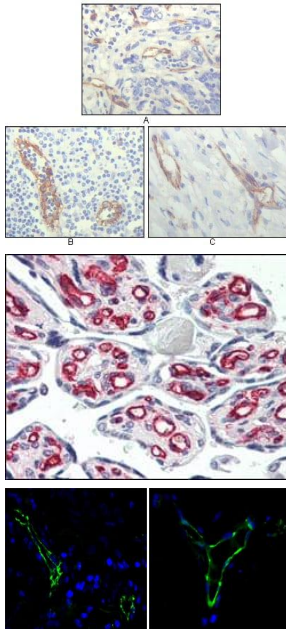
ELISA: 1:10000

Not yet tested in other applications.

Images



Western blot analysis using CD31 mouse mAb against truncated CD31 recombinant protein.



Immunohistochemical analysis of paraffin-embedded human lung cancer (A), lymphonodus tissue (B) and breast cancer (C), showing cytoplasmic localization of vascular endothelial cells using CD31 mouse mAb with DAB staining.

Immunohistochemical analysis of paraffin-embedded human placenta using CD31 mouse mAb.

Immunofluorescence analysis of paraffin-embedded human lung cancer(left) and breast cancer(right) cells using CD31 mouse mAb (green). Blue: DRAQ5 fluorescent DNA dye.

Storage

Store at 4°C short term. Aliquot and store at -20°C long term.

501 Changsheng S Rd, Nanhu Dist, Jiaxing, Zhejiang, China

Tel: 86 21 31007137 | E-mail: save@bt-laboratory.com | www.bt-laboratory.com