

CD276 Monoclonal Antibody

Description

Product type	Antibody
Code	BT-MCA4390
Host	Mouse
Isotype	Mouse IgG1
Size	100µL, 50µL
Immunogen	Purified recombinant fragment of human CD276 expressed in E. Coli.
Mol wt	57kDa
Species reactivity	Human
Clonality	Monoclonal
Recommended application	IHC,FCM
Concentration	N/A
Full name	N/A
Synonyms	B7H3;B7-H3;4Ig-B7-H3;CD276

This product is for research use only, not for use in human, therapeutic or diagnostic procedure.

Background

Costimulatory B7 molecules (e.g., B7-1, or CD80; MIM 112203) signal through CD28 (MIM 186760) family molecules such as CD28, CTLA4 (MIM 123890), and ICOS (MIM 604558). May participate in the regulation of T-cell-mediated immune response. May play a protective role in tumor cells by inhibiting natural-killer mediated cell lysis as well as a role of marker for detection of neuroblastoma cells. May be involved in the development of acute and chronic transplant rejection and in the regulation of lymphocytic activity at mucosal surfaces. Could also play a key role in providing the placenta and fetus with a suitable immunological environment throughout pregnancy. Both isoform 1 and isoform 2 appear to be redundant in their ability to modulate CD4 T-cell responses. Isoform 2 is shown to enhance the induction of cytotoxic T-cells and selectively stimulates interferon gamma production in the presence of T-cell receptor signaling.

Recommended Dilution

WB: 1:500 - 1:2000

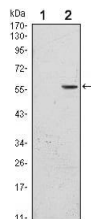
IHC-p: 1:200 - 1:1000

FCM: 1:200 - 1:400

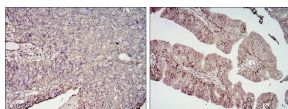
ELISA: 1:10000

Not yet tested in other applications.

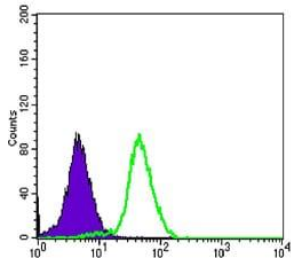
Images



Western blot analysis using CD276 mAb against HEK293 (1) and CD276(AA: 30-130)-hIgGFc transfected HEK293 (2) cell lysate.



Immunohistochemical analysis of paraffin-embedded cervical cancer tissues (left) and ovarian cancer tissues (right) using CD276 mouse mAb with DAB staining.



Flow cytometric analysis of PC-3 cells using CD276 mouse mAb (green) and negative control (purple).

Storage

Store at 4°C short term. Aliquot and store at -20°C long term.

501 Changsheng S Rd, Nanhu Dist, Jiaxing, Zhejiang, China

Tel: 86 21 31007137 | E-mail: save@bt-laboratory.com | www.bt-laboratory.com