

## ANXA1 Monoclonal Antibody

### Description

Product type	Antibody
Code	BT-MCA4401
Host	Mouse
Isotype	Mouse IgG1
Size	100µL, 50µL
Immunogen	Purified recombinant fragment of human ANXA1 (AA: 144-248 ) expressed in E. Coli.
Mol wt	38.7kDa
Species reactivity	Human,Mouse,Monkey
Clonality	Monoclonal
Recommended application	WB,IHC
Concentration	N/A
Full name	N/A
Synonyms	ANX1;LPC1

This product is for research use only, not for use in human, therapeutic or diagnostic procedure.

### Background

Annexin I belongs to a family of Ca<sup>2+</sup>-dependent phospholipid binding proteins which have a molecular weight of approximately 35,000 to 40,000 and are preferentially located on the cytosolic face of the plasma membrane. Annexin I protein has an apparent relative molecular mass of 40 kDa, with phospholipase A2 inhibitory activity. Since phospholipase A2 is required for the biosynthesis of the potent mediators of inflammation, prostaglandins and leukotrienes, annexin I may have potential anti-inflammatory activity.

### Recommended Dilution

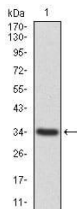
WB: 1:500 - 1:2000

IHC-p: 1:200 - 1:1000

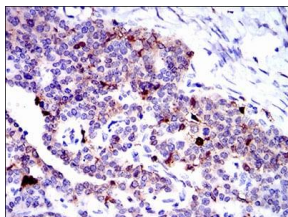
ELISA: 1:10000

Not yet tested in other applications.

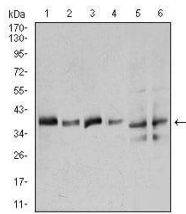
### Images



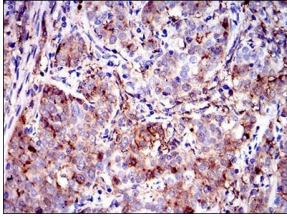
Western blot analysis using ANXA1 mAb against human ANXA1 recombinant protein. (Expected MW is 33.7 kDa)



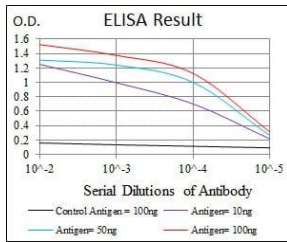
Immunohistochemical analysis of paraffin-embedded ovarian cancer tissues using ANXA1 mouse mAb with DAB staining.



Western blot analysis using ANXA1 mouse mAb against HeLa (1), A549 (2), K562 (3), NIH3T3 (4), C6 (5), and COS7 (6) cell lysate.



Immunohistochemical analysis of paraffin-embedded cervical cancer tissues using ANXA1 mouse mAb with DAB staining.



Black line: Control Antigen (100 ng); Purple line: Antigen(10ng); Blue line: Antigen (50 ng); Red line: Antigen (100 ng);

### Storage

Store at 4°C short term. Aliquot and store at -20°C long term.

501 Changsheng S Rd, Nanhu Dist, Jiaxing, Zhejiang, China

Tel: 86 21 31007137 | E-mail: [save@bt-laboratory.com](mailto:save@bt-laboratory.com) | [www.bt-laboratory.com](http://www.bt-laboratory.com)