

CD223 Monoclonal Antibody

Description

Product type	Antibody
Code	BT-MCA4415
Host	Mouse
Isotype	Mouse IgG1
Size	100 μ L, 50 μ L
Immunogen	Purified recombinant fragment of human CD223 (AA: extra 66-199) expressed in E. Coli.
Mol wt	57.4kDa
Species reactivity	Human
Clonality	Monoclonal
Recommended application	WB,FCM
Concentration	N/A
Full name	N/A
Synonyms	LAG3

This product is for research use only, not for use in human, therapeutic or diagnostic procedure.

Background

Lymphocyte-activation protein 3 belongs to Ig superfamily and contains 4 extracellular Ig-like domains. The LAG3 gene contains 8 exons. The sequence data, exon/intron organization, and chromosomal localization all indicate a close relationship of LAG3 to CD4.

Recommended Dilution

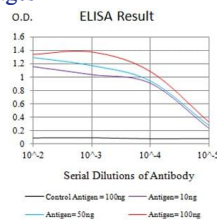
WB: 1:500 - 1:2000

FCM: 1:200 - 1:400

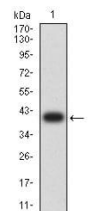
ELISA: 1:10000

Not yet tested in other applications.

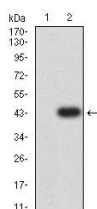
Images



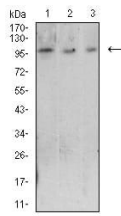
Black line: Control Antigen (100 ng);Purple line: Antigen (10ng); Blue line: Antigen (50 ng); Red line:Antigen (100 ng)



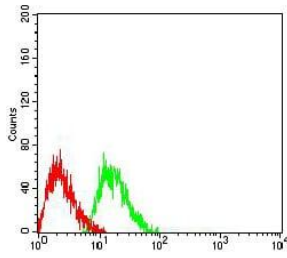
Western blot analysis using CD223 mAb against human CD223 (AA: extra 66-199) recombinant protein. (Expected MW is 40.4 kDa)



Western blot analysis using CD223 mAb against HEK293 (1) and CD223 (AA: extra 66-199)-hlgGFc transfected HEK293 (2) cell lysate.



Western blot analysis using CD223 mouse mAb against Raji (1), Ramos (2), and MOLT4 (3) cell lysate.



Flow cytometric analysis of Jurkat cells using CD223 mouse mAb (green) and negative control (red).

Storage

Store at 4°C short term. Aliquot and store at -20°C long term.

501 Changsheng S Rd, Nanhu Dist, Jiaxing, Zhejiang, China

Tel: 86 21 31007137 | E-mail: save@bt-laboratory.com | www.bt-laboratory.com