

MEF2C Monoclonal Antibody

Description

Product type	Antibody
Code	BT-MCA4427
Host	Mouse
Isotype	Mouse IgG1
Size	100µL, 50µL
Immunogen	Purified recombinant fragment of human MEF2C (AA: 1-125) expressed in E. Coli.
Mol wt	51.2kDa
Species reactivity	Human,Mouse
Clonality	Monoclonal
Recommended application	WB,IHC,FCM
Concentration	N/A
Full name	N/A
Synonyms	DEL5q14.3;C5DELq14.3

This product is for research use only, not for use in human, therapeutic or diagnostic procedure.

Background

N/A

Recommended Dilution

WB: 1:500 - 1:2000

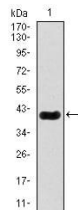
IHC-p: 1:200 - 1:1000

FCM: 1:200 - 1:400

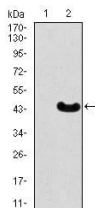
ELISA: 1:10000

Not yet tested in other applications.

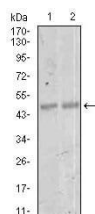
Images



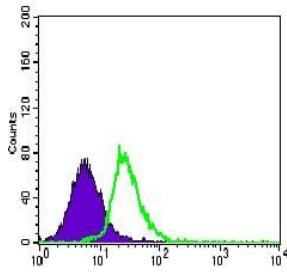
Western blot analysis using MEF2C mAb against human MEF2C recombinant protein. (Expected MW is 40 kDa)



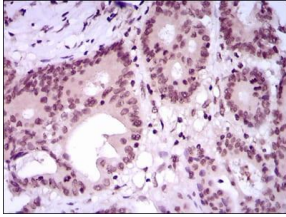
Western blot analysis using MEF2C mAb against HEK293 (1) and MEF2C (AA: 1-125)-hIgGFc transfected HEK293 (2) cell lysate.



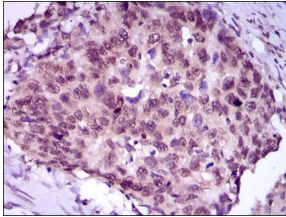
Western blot analysis using MEF2C mouse mAb against NIH3T3 (1) and 3T3-L1 (2) cell lysate.



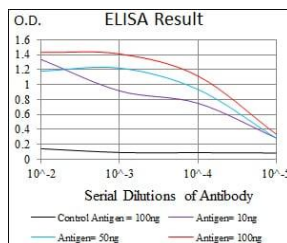
Flow cytometric analysis of HeLa cells using MEF2C mouse mAb (green) and negative control (purple).



Immunohistochemical analysis of paraffin-embedded colon cancer tissues using MEF2C mouse mAb with DAB staining.



Immunohistochemical analysis of paraffin-embedded esophageal cancer tissues using MEF2C mouse mAb with DAB staining.



Black line: Control Antigen (100 ng); Purple line: Antigen(10ng); Blue line: Antigen (50 ng); Red line: Antigen (100 ng);

Storage

Store at 4°C short term. Aliquot and store at -20°C long term.

501 Changsheng S Rd, Nanhu Dist, Jiaxing, Zhejiang, China

Tel: 86 21 31007137 | E-mail: save@bt-laboratory.com | www.bt-laboratory.com