

PTEN Monoclonal Antibody

Description

Product type	Antibody
Code	BT-MCA4500
Host	Mouse
Isotype	Mouse IgG1
Size	100 μ L, 50 μ L
Immunogen	Purified recombinant fragment of PTEN expressed in E. Coli.
Mol wt	54kDa
Species reactivity	Human,Mouse
Clonality	Monoclonal
Recommended application	WB,ICC,FCM
Concentration	N/A
Full name	N/A
Synonyms	BZS;MHAM;TEP1;PTEN1

This product is for research use only, not for use in human, therapeutic or diagnostic procedure.

Background

PTEN (phosphatase and tensin homolog) was identified as a tumor suppressor that is mutated in a large number of cancers at high frequency. This protein is a phosphatidylinositol-3,4,5-trisphosphate 3-phosphatase. It contains a tensin like domain as well as a catalytic domain similar to that of the dual specificity protein tyrosine phosphatases. Unlike most of the protein tyrosine phosphatases, this protein preferentially dephosphorylates phosphoinositide substrates. It negatively regulates intracellular levels of phosphatidylinositol-3,4,5-trisphosphate in cells and functions as a tumor suppressor by negatively regulating AKT/PKB signaling pathway.

Recommended Dilution

WB: 1:500 - 1:2000

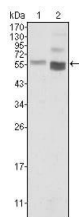
ICC: 1:200 - 1:1000

FCM: 1:200 - 1:400

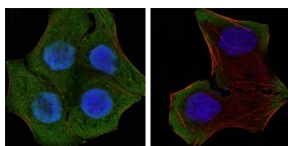
ELISA: 1:10000

Not yet tested in other applications.

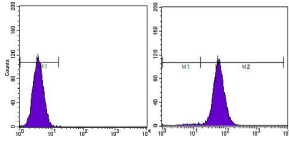
Images



Western blot analysis using PTEN mouse mAb against HeLa (1) and NIH/3T3 (2) cell lysate.



Confocal Immunofluorescence analysis of HeLa (left) and HepG2 (right) cells using PTEN mouse mAb (green). Red: Actin filaments have been labeled with DY-554 phalloidin. Blue: DRAQ5 fluorescent DNA dye.



Flow cytometric analysis of HeLa cells using PTEN mouse mAb (right) and negative control (left).

Storage

Store at 4°C short term. Aliquot and store at -20°C long term.

501 Changsheng S Rd, Nanhu Dist, Jiaxing, Zhejiang, China

Tel: 86 21 31007137 | E-mail: save@bt-laboratory.com | www.bt-laboratory.com