

MCL-1 Monoclonal Antibody

Description

Product type	Antibody
Code	BT-MCA4521
Host	Mouse
Isotype	Mouse IgG1
Size	100µL, 50µL
Immunogen	Purified recombinant fragment of human MCL-1 expressed in E. Coli.
Mol wt	37kDa
Species reactivity	Human
Clonality	Monoclonal
Recommended application	WB,IHC,ICC
Concentration	N/A
Full name	N/A
Synonyms	EAT, MCL1L, MCL1S

This product is for research use only, not for use in human, therapeutic or diagnostic procedure.

Background

N/A

Recommended Dilution

WB: 1:500 - 1:2000

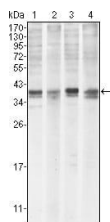
IHC-p: 1:200 - 1:1000

ICC: 1:200 - 1:1000

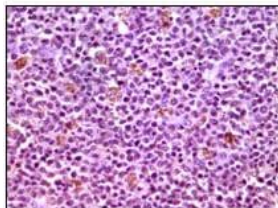
ELISA: 1:10000

Not yet tested in other applications.

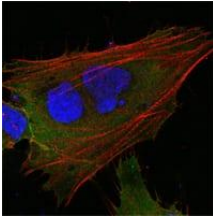
Images



Western blot analysis using MCL1 mouse mAb against HeLa (1), BCBL-1 (2), Jurkat (3) and HL60 (4) cell lysate.



Immunohistochemical analysis of paraffin-embedded human lymphnode tissues using MCL1 mouse mAb with DAB staining.



Confocal Immunofluorescence analysis of HepG2 cells using MCL1 mouse mAb (green). Red: Actin filaments have been labeled with DY-554 phalloidin. Blue: DRAQ5 fluorescent DNA dye.

Storage

Store at 4°C short term. Aliquot and store at -20°C long term.

501 Changsheng S Rd, Nanhu Dist, Jiaxing, Zhejiang, China

Tel: 86 21 31007137 | E-mail: save@bt-laboratory.com | www.bt-laboratory.com