

KLHL13 Monoclonal Antibody

Description

Product type	Antibody
Code	BT-MCA4530
Host	Mouse
Isotype	Mouse IgG1
Size	100µL, 50µL
Immunogen	Purified recombinant fragment of human KLHL13 expressed in E. Coli.
Mol wt	74kDa
Species reactivity	Human
Clonality	Monoclonal
Recommended application	WB,IHC,ICC,FCM
Concentration	N/A
Full name	N/A
Synonyms	BKLHD2;FLJ10262;MGC74791;KLHL13

This product is for research use only, not for use in human, therapeutic or diagnostic procedure.

Background

KLHL13 (kelch-like 13), also known as BKLHD2 (BTB and kelch domain-containing protein 2), is a 604 amino acid protein that contains six Kelch repeats and one BTB/POZ domain. Expressed predominantly in brain, KLHL13 is believed to play a role in protein ubiquitination and may function as a substrate- specific adapter of an E3 ubiquitin-protein ligase complex. E3 ligases accept a ubiquitin residue from an E2 ubiquitin-conjugating enzyme and immediately transfer that residue to a protein that is targeted for degradation. Specifically, KLHL13 interacts with KLHL9 and CUL-3, a member of the cullin family of mediators that participate in the selective targeting of proteins for ubiquitin-mediated proteolysis. Via its BTB and C-terminal Kelch (BACK) motif, KLHL13 is thought to play a role in spatially orientating substrates in the CUL-3 ligase.

Recommended Dilution

WB: 1:500 - 1:2000

IHC-p: 1:200 - 1:1000

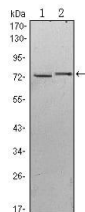
ICC: 1:200 - 1:1000

FCM: 1:200 - 1:400

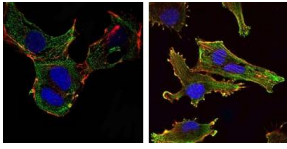
ELISA: 1:10000

Not yet tested in other applications.

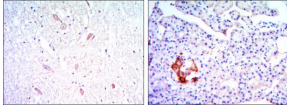
Images



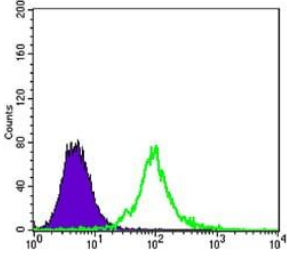
Western blot analysis using KLHL13 mouse mAb against HeLa (1) and MCF-7 (2) cell lysate.



Immunofluorescence analysis of NTERA-2 cells (left) and U251 (right) cells using KLHL13 mouse mAb (green). Blue: DRAQ5 fluorescent DNA dye. Red: Actin filaments have been labeled with Alexa Fluor-555 phalloidin.



Immunohistochemical analysis of paraffin-embedded brain tissues (left) and pancreas tissues (right) using KLHL13 mouse mAb with DAB staining.



Flow cytometric analysis of 3T3/L1 cells using KLHL13 mouse mAb (green) and negative control (purple).

Storage

Store at 4°C short term. Aliquot and store at -20°C long term.

501 Changsheng S Rd, Nanhu Dist, Jiaxing, Zhejiang, China

Tel: 86 21 31007137 | E-mail: save@bt-laboratory.com | www.bt-laboratory.com