

## PPP1CA Monoclonal Antibody

### Description

|                                |   |
|--------------------------------|---|
| <b>Product type</b>            | Antibody  |
| <b>Code</b>                    | BT-MCA4534  |
| <b>Host</b>                    | Mouse   |
| <b>Isotype</b>                 | Mouse IgG1  |
| <b>Size</b>                    | 100µL, 50µL   |
| <b>Immunogen</b>               | Purified recombinant fragment of human PPP1CA expressed in E. Coli. |
| <b>Mol wt</b>                  | 38kDa   |
| <b>Species reactivity</b>      | Human   |
| <b>Clonality</b>               | Monoclonal  |
| <b>Recommended application</b> | WB  |
| <b>Concentration</b>           | N/A   |
| <b>Full name</b>               | N/A   |
| <b>Synonyms</b>                | PP-1A;PPP1A;PP1alpha  |

This product is for research use only, not for use in human, therapeutic or diagnostic procedure.

### Background

The protein encoded by this gene is one of the three catalytic subunits of protein phosphatase 1 (PP1). PP1 is a serine/threonine specific protein phosphatase known to be involved in the regulation of a variety of cellular processes, such as cell division, glycogen metabolism, muscle contractility, protein synthesis, and HIV-1 viral transcription. Increased PP1 activity has been observed in the end stage of heart failure. Studies in both human and mice suggest that PP1 is an important regulator of cardiac function. Mouse studies also suggest that PP1 functions as a suppressor of learning and memory. Three alternatively spliced transcript variants encoding different isoforms have been found for this gene.

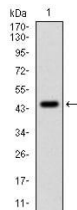
### Recommended Dilution

WB: 1:500 - 1:2000

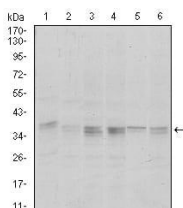
ELISA: 1:10000

Not yet tested in other applications.

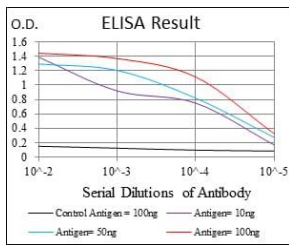
### Images



Western blot analysis using PPP1CA mAb against human PPP1CA (AA: 174-330) recombinant protein. (Expected MW is 43.4 kDa)



Western blot analysis using PPP1CA mouse mAb against Hela (1), HepG2 (2), MCF-7 (3), Jurkat (4) and A549 (5) cell lysate.



Black line: Control Antigen (100 ng); Purple line: Antigen(10ng); Blue line: Antigen (50 ng); Red line: Antigen (100 ng);

### Storage

Store at 4°C short term. Aliquot and store at -20°C long term.

501 Changsheng S Rd, Nanhu Dist, Jiaxing, Zhejiang, China

Tel: 86 21 31007137 | E-mail: [save@bt-laboratory.com](mailto:save@bt-laboratory.com) | [www.bt-laboratory.com](http://www.bt-laboratory.com)